



Confederation Line
Ligne de la Confédération



HIGHWAY 417 EXPANSION PROJECT

Evelyn Danilko
City of Ottawa
June 11, 2013

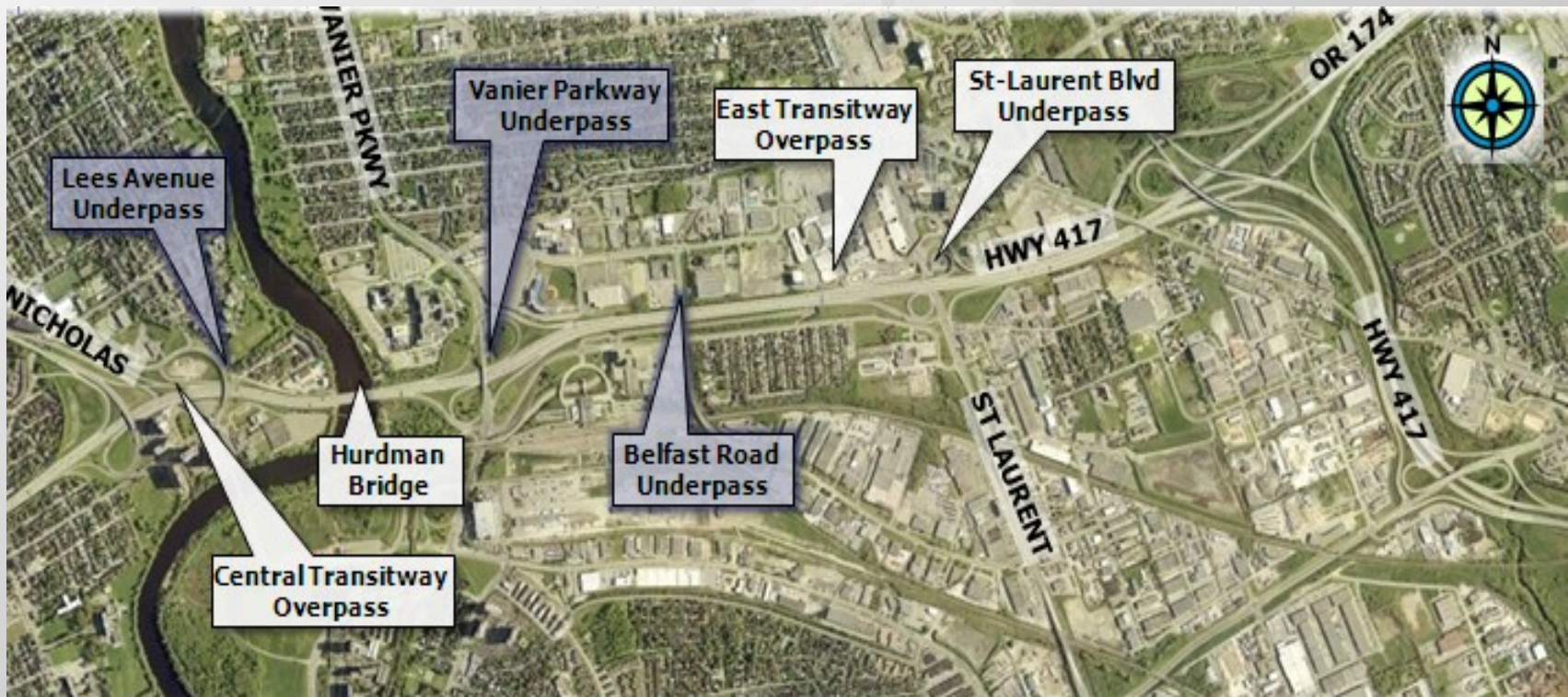


OVERVIEW

- Project overview
- Construction Schedule
- Community Impacts
 - Lees S-E on-ramp
 - Lees Rapid Bridge Replacement
 - Lees & Hurdman Station
- Questions



HIGHWAY 417 EXPANSION



- Highway 417 will be widened by 1 lane in each direction between Nicholas and the 417/174 split
- Construction scheduled from May 2013 to Fall 2015
- Additional lanes reserved for Transitway buses from 2015 to 2018

CONSTRUCTION SCHEDULE

- Stage 1: Spring 2013 – Summer 2014
 - Construction of additional outside lane
 - Structure rehabilitation and widening works:
 - Central Transitway
 - Hurdman Bridge
 - East Transitway
 - St. Laurent overpass

- Stage 2: Summer 2014 – Fall 2015
 - Median reconstruction
 - Rapid bridge replacements:
 - Lees
 - Vanier
 - Belfast



UPCOMING WORKS

➤ June 2013

- Eastbound and Westbound lane reductions
 - 3 lanes will be maintained with some exceptions
- Lees S-E on-ramp long-term temporary closure
- Nicholas N-E on-ramp reduced to 1 lane
- Vanier E-N/S off-ramp lane reduction
- St. Laurent S-E ramp closed permanently

➤ July 2013

- Vanier N-W ramp closed (4 week duration)



LEES ON-RAMP

- Lees S-E on-ramp temporarily closed beginning June 13, 2013 to 2018
 - 2013 to 2015 – construction requirement
 - 2015 to 2018 – transit requirement
- Suggested detour route via Main Street-Riverside Drive-Highway 417
 - Alternatives:
 - » Hawthorne-Pretoria
 - » Lees-King Edward-Laurier-Nicholas



LEES RAPID REPLACEMENT

- Construction: July to September 2014
- Lees Avenue to be closed for 12 weeks for abutment and substructure construction
- Two (2) distinct single overnight 17-hour full closures of Highway 417 for bridge removal and installation
 - 17-hour closure period from 6PM Saturday to 11AM Sunday
 - Highway 417 closed from Nicholas Street to Vanier Parkway



LEES AVENUE CLOSURE- DETOUR



LEES & HURDMAN STATION

- Fall 2015 – 2018
 - Transitway is detoured onto Highway 417 between Blair and Hurdman
 - Hurdman Station Transitway services limited
- Spring 2016 – 2018
 - Transitway is detoured onto Highway 417 between Blair and Laurier Station
 - Campus Station is closed (next stop Laurier Station)
 - Lees Station is closed to Transitway routes



NOTIFICATIONS

- Motorists will be advised of traffic changes via:
 - Road signs
 - Public Service Announcements
 - Twitter (@Ottawa_Traffic)
 - Radio
 - www.Ottawa.ca
 - » Traffic Report
 - » Interactive Traffic Map
 - » Mobility tools





Questions?