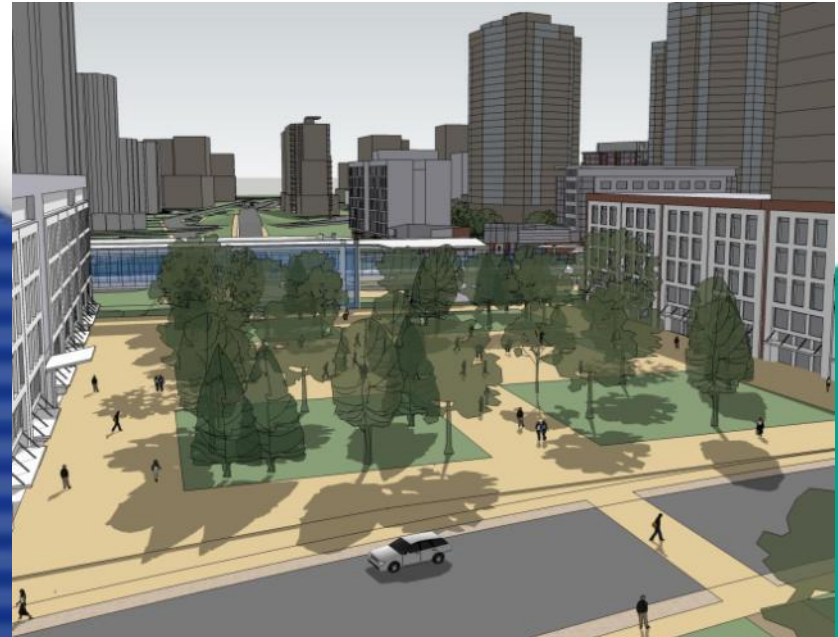




Ottawa's Transit-Oriented Development (TOD) Studies



June 11, 2013

**City of Ottawa – Planning and Growth Management
Update Presentation to OECA**

Presentation Highlights

- **Introductions**
- **TOD Overview**
- **TOD Study Update –
Maps & Illustrations**
- **Next Steps**



Transit



Walking



Cycling



Roads

The Phase 1 LRT Project



Light Rail Transit Corridor

Corridor du service de transport en commun par train léger rapide

Tunnel Corridor | Couloir du tunnel



Tunney's Pasture to Blair Station | Pré Tunney à la station Blair

Transportation Master Plan - Phase I, Increment I | Plan directeur des transports – phase 1, étape 1

What is Transit-Oriented Development?

- **A pedestrian/cyclist-oriented, mixed land use form of development focused within an 800m walk of a rapid transit station.**
- **Concentrates higher densities near stations.**
- **Optimizes use of City infrastructure and the public transit network.**



Transit Station TOD Development

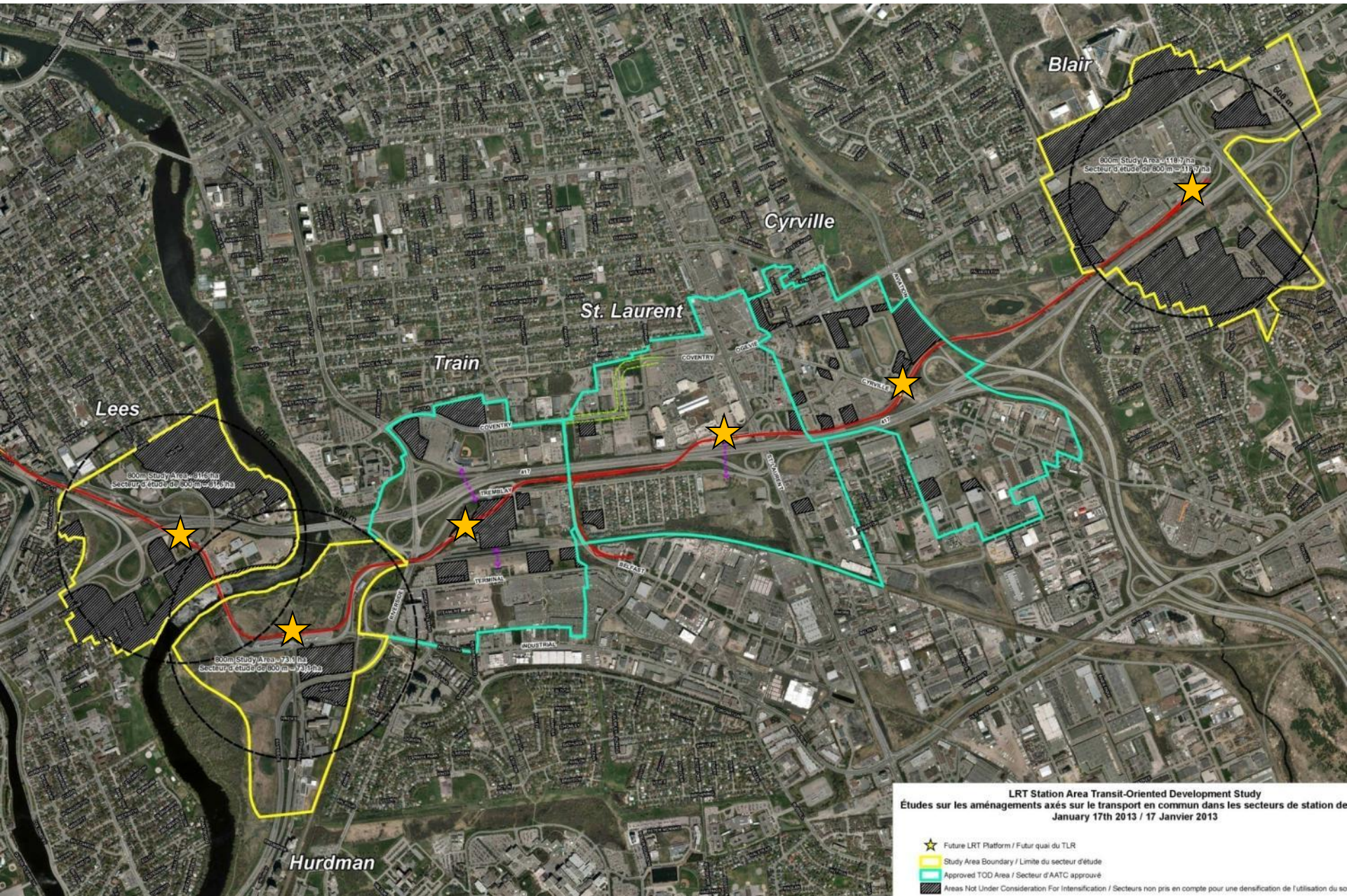


Ottawa TOD Studies

- **Sets the stage for future growth.**
- **Design Policies and Land Use Plans.**
- **Supported by Servicing Overview Study:**
 - **Piped services and Hydro**
 - **Storm water management**
 - **Transportation**



Draft TOD Study Area Boundaries



LRT Station Area Transit-Oriented Development Study
Études sur les aménagements axés sur le transport en commun dans les secteurs de station de LRT
January 17th 2013 / 17 Janvier 2013

- ★ Future LRT Platform / Futur quai du LRT
- Study Area Boundary / Limite du secteur d'étude
- Approved TOD Area / Secteur d'AATC approuvé
- Areas Not Under Consideration For Intensification / Secteurs non pris en compte pour une densification de l'utilisation du sol

TOD Study Schedule

PROJECT COMPONENT	TARGET DATE
Project Commencement	January 2013
Existing Servicing and Preliminary TOD Analysis	February 2012
Consultation	March 2013
Preliminary Servicing Overview Study	April / May 2013
Preliminary TOD Plan Mapping	April / May 2013
Consultation	June 2013
TOD Plan and Servicing Overview Revisions	July / August 2013
Public Open House Meeting	September 2013
TOD Plan and Servicing Overview Revisions	October 2013
Consultation	November 2013
Planning Committee and Council	November / December 2013
Project Completion	December 2013

Preliminary Lees TOD Plan

Street Network

Lees TOD Plan Area Secteur d'AATC Lees

LRT Station Area Transit-Oriented Development Study (TOD)
Études sur les aménagements axés sur le transport en commun (AATC)
dans les secteurs de station de TLR

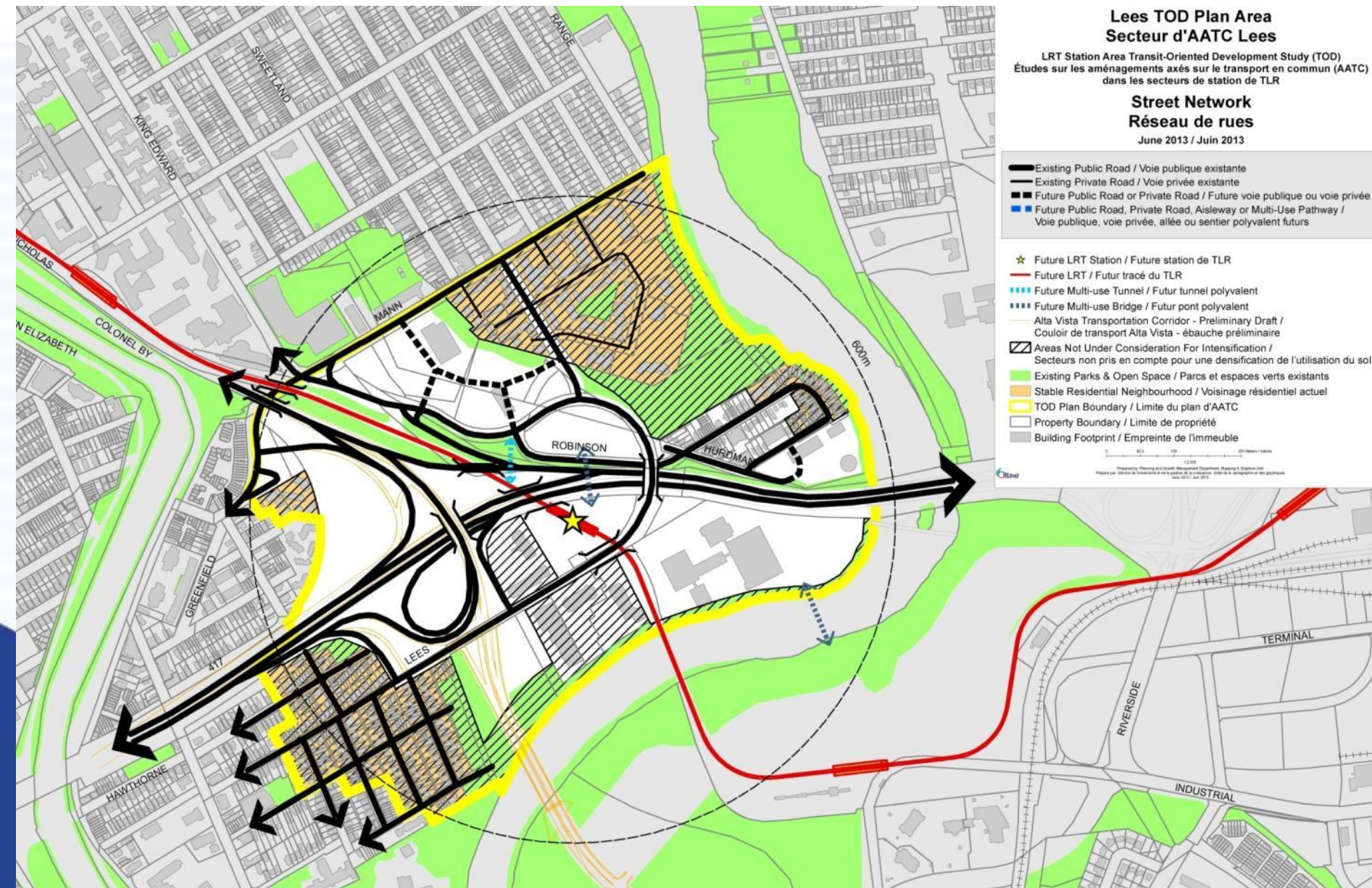
Street Network Réseau de rues

June 2013 / Juin 2013

- Existing Public Road / Voie publique existante
- Existing Private Road / Voie privée existante
- Future Public Road or Private Road / Future voie publique ou voie privée
- Future Public Road, Aisleway or Multi-Use Pathway / Voie publique, voie privée, allée ou sentier polyvalent futurs

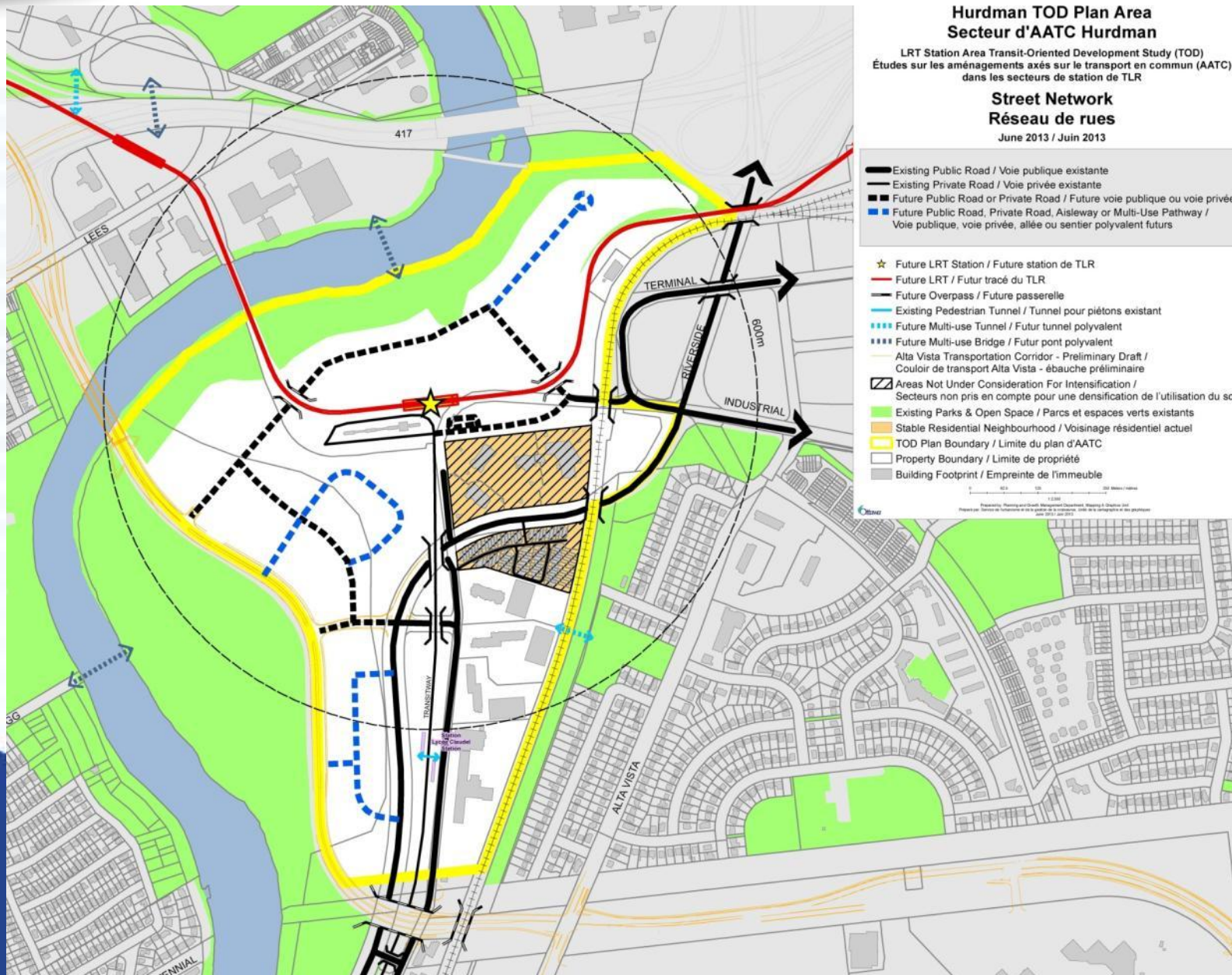
- ★ Future LRT Station / Future station de TLR
- Future LRT / Futur tracé du TLR
- Future Multi-use Tunnel / Futur tunnel polyvalent
- Future Multi-use Bridge / Futur pont polyvalent
- Alta Vista Transportation Corridor - Preliminary Draft / Couloir de transport Alta Vista - ébauche préliminaire
- ▨ Areas Not Under Consideration For Intensification / Secteurs non pris en compte pour une densification de l'utilisation du sol
- Existing Parks & Open Space / Parcs et espaces verts existants
- Stable Residential Neighbourhood / Voisinage résidentiel actuel
- TOD Plan Boundary / Limite du plan d'AATC
- Property Boundary / Limite de propriété
- Building Footprint / Empreinte de l'immeuble

Prepared by: Planning and Growth Management Department, City of Ottawa
Préparé par: Service de l'urbanisme et de la planification, Ville de Ottawa
June 2013 / Juin 2013



Preliminary Hurdman TOD Plan

Street Network



Preliminary Lees TOD Plan

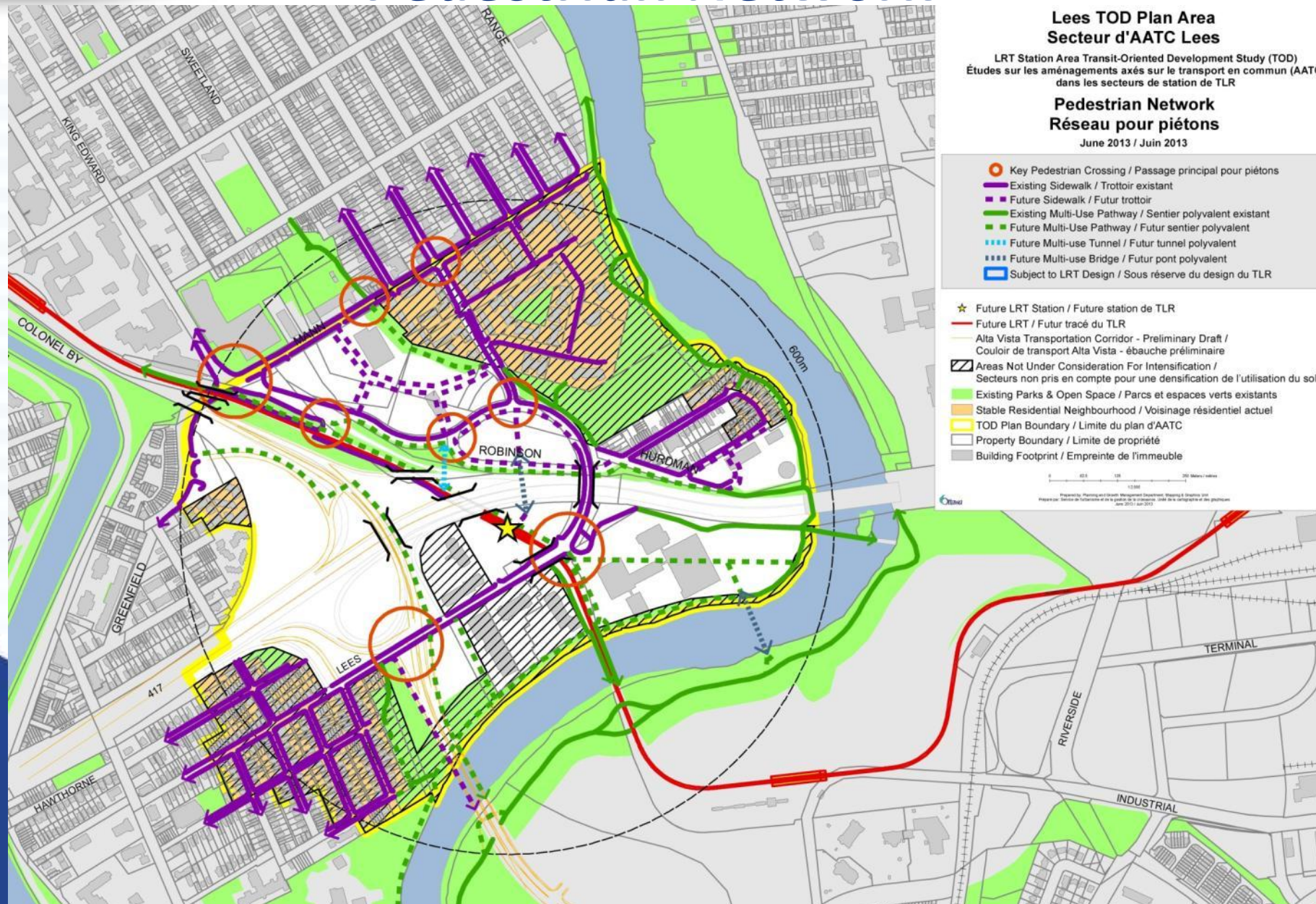
Pedestrian Network

Lees TOD Plan Area Secteur d'AATC Lees

LRT Station Area Transit-Oriented Development Study (TOD)
Études sur les aménagements axés sur le transport en commun (AATC)
dans les secteurs de station de LTR

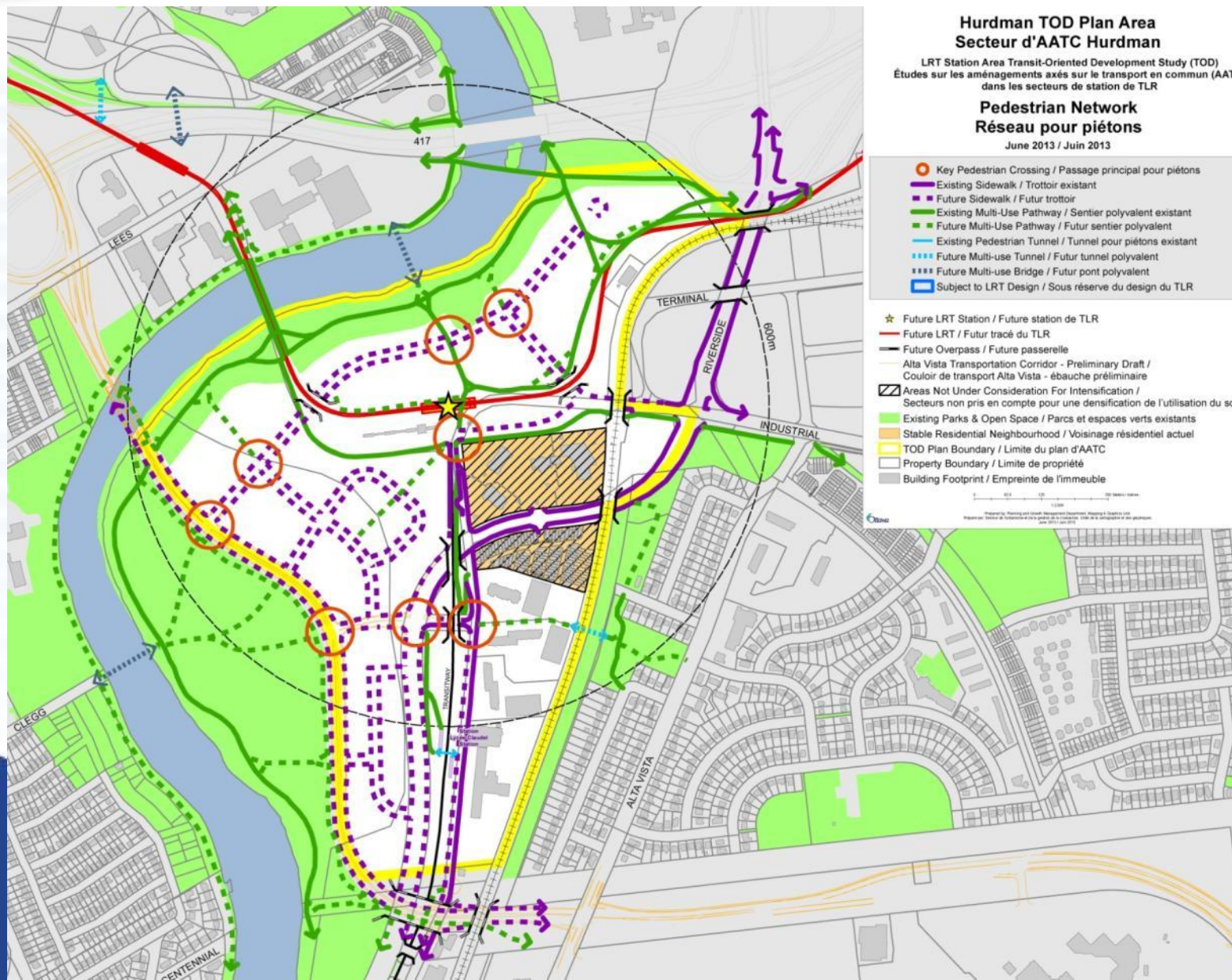
Pedestrian Network Réseau pour piétons

June 2013 / Juin 2013



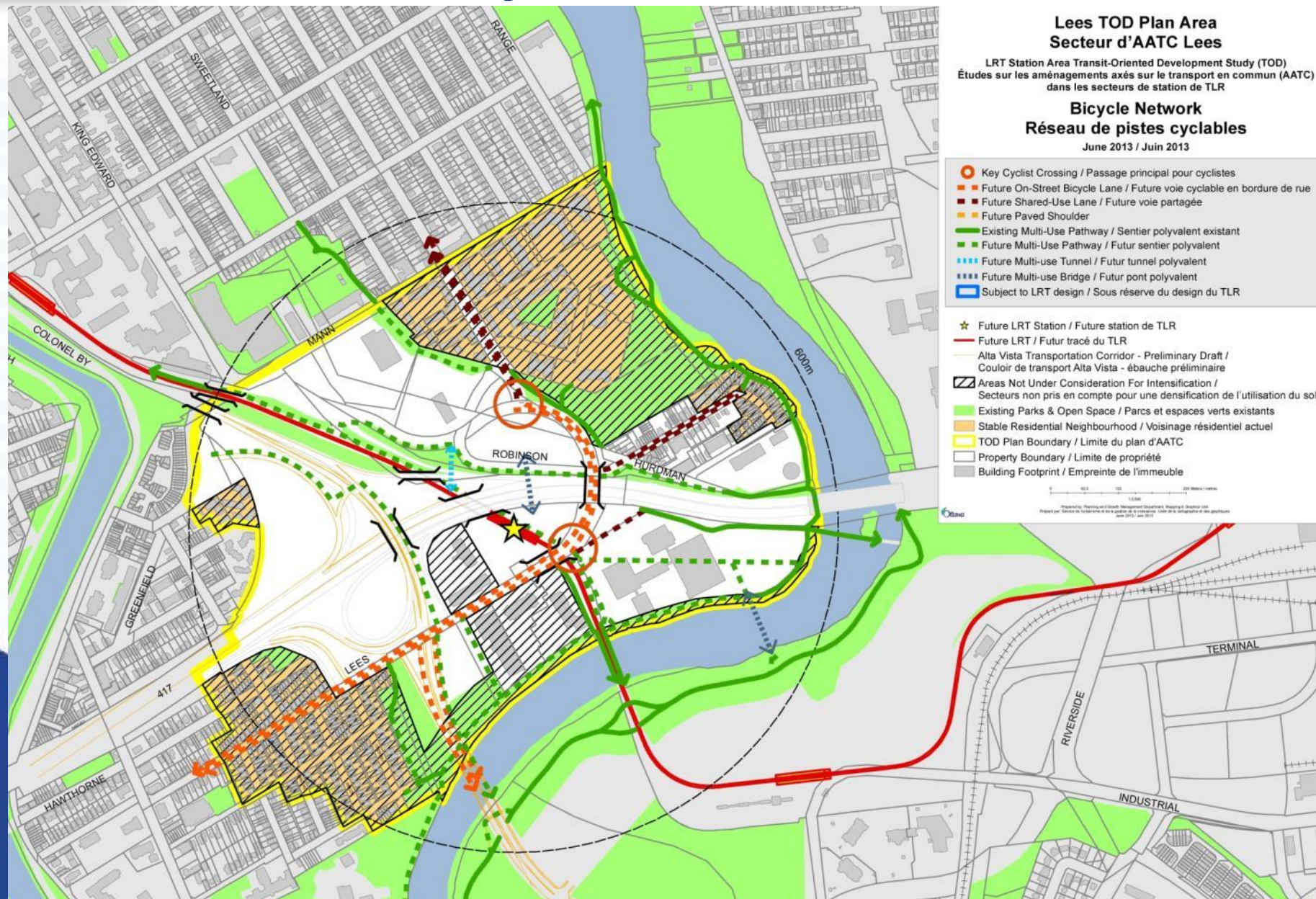
Preliminary Hurdman TOD Plan

Pedestrian Network



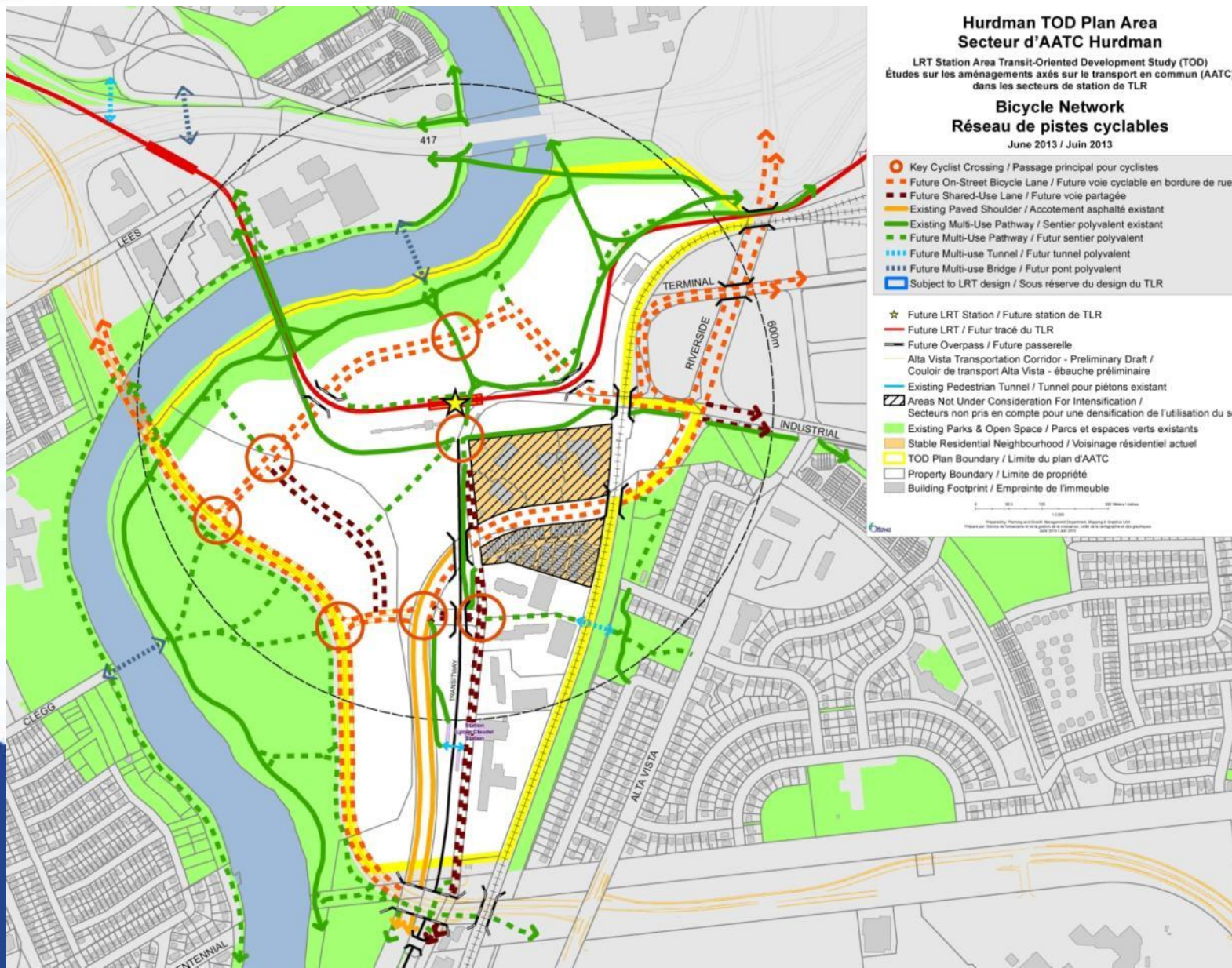
Preliminary Lees TOD Plan

Bicycle Network



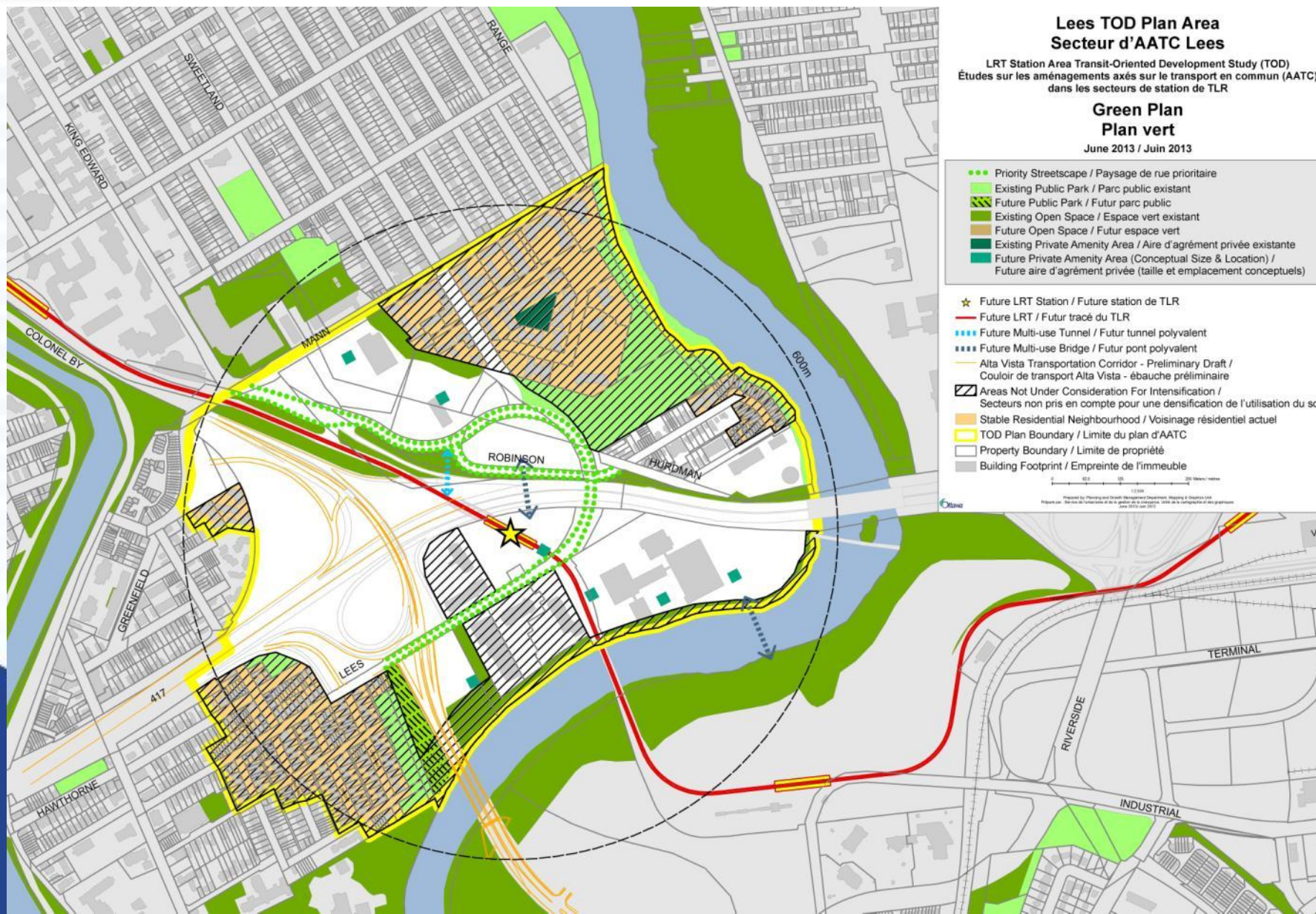
Preliminary Hurdman TOD Plan

Bicycle Network



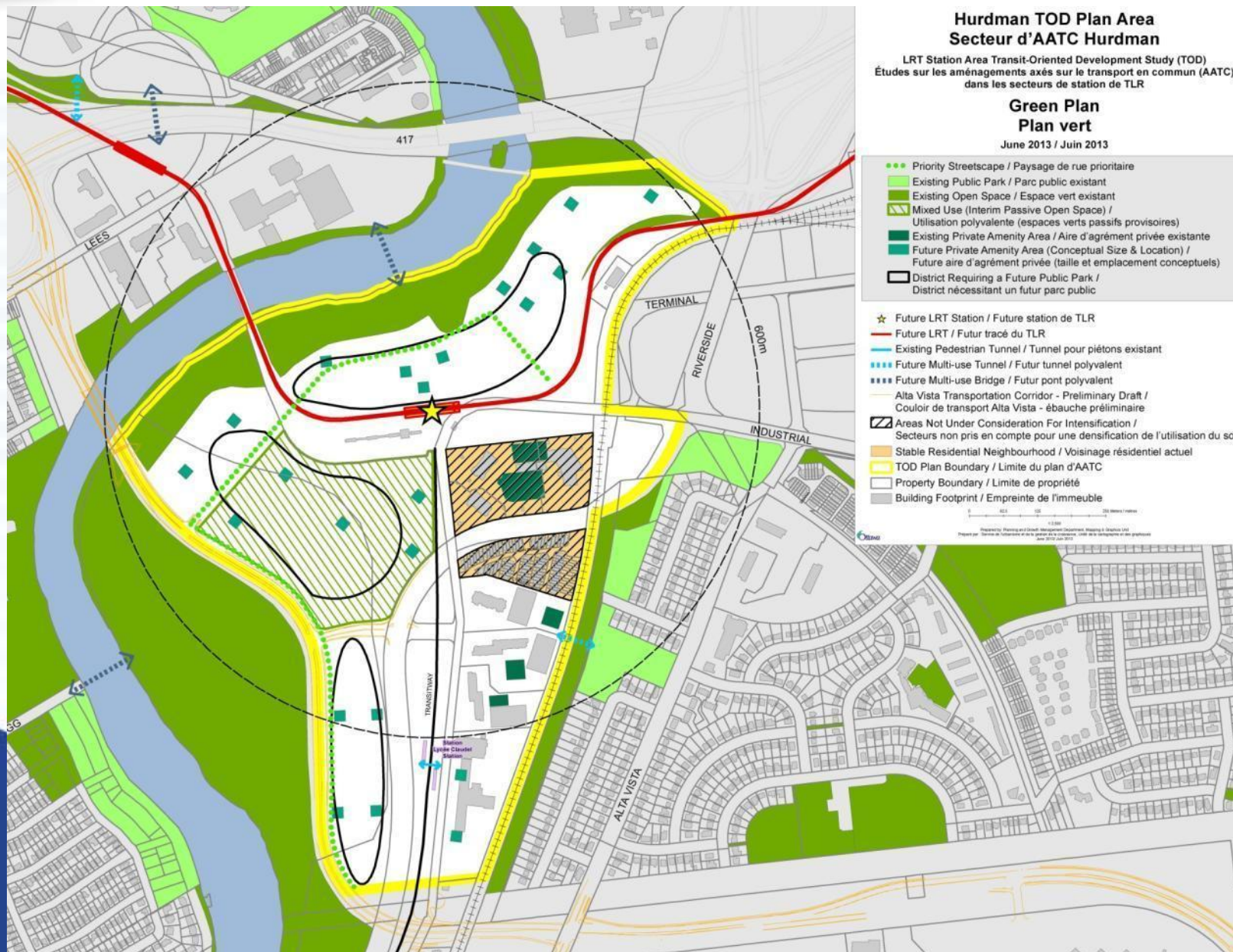
Preliminary Lees TOD Plan

Green Plan



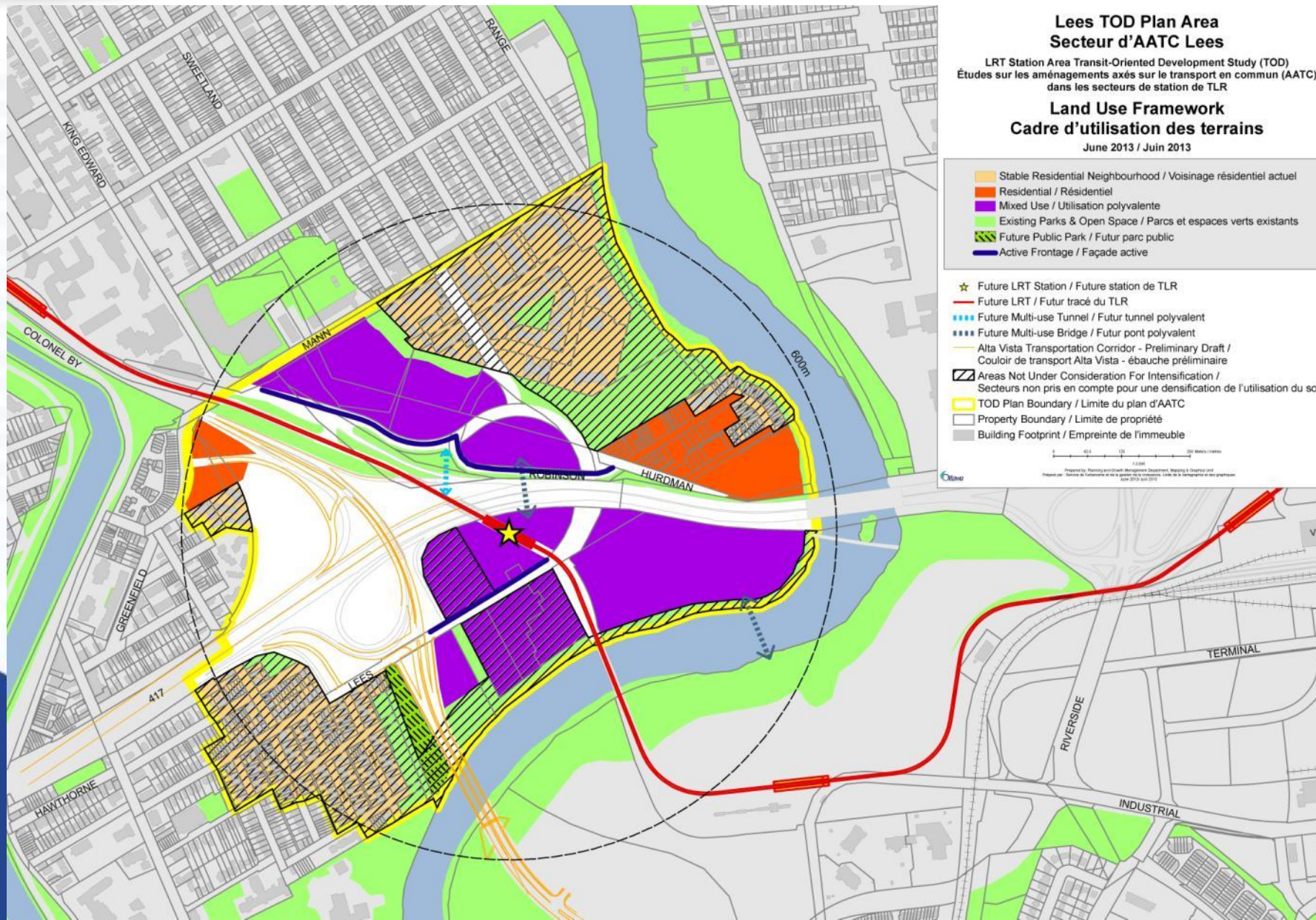
Preliminary Hurdman TOD Plan

Green Plan



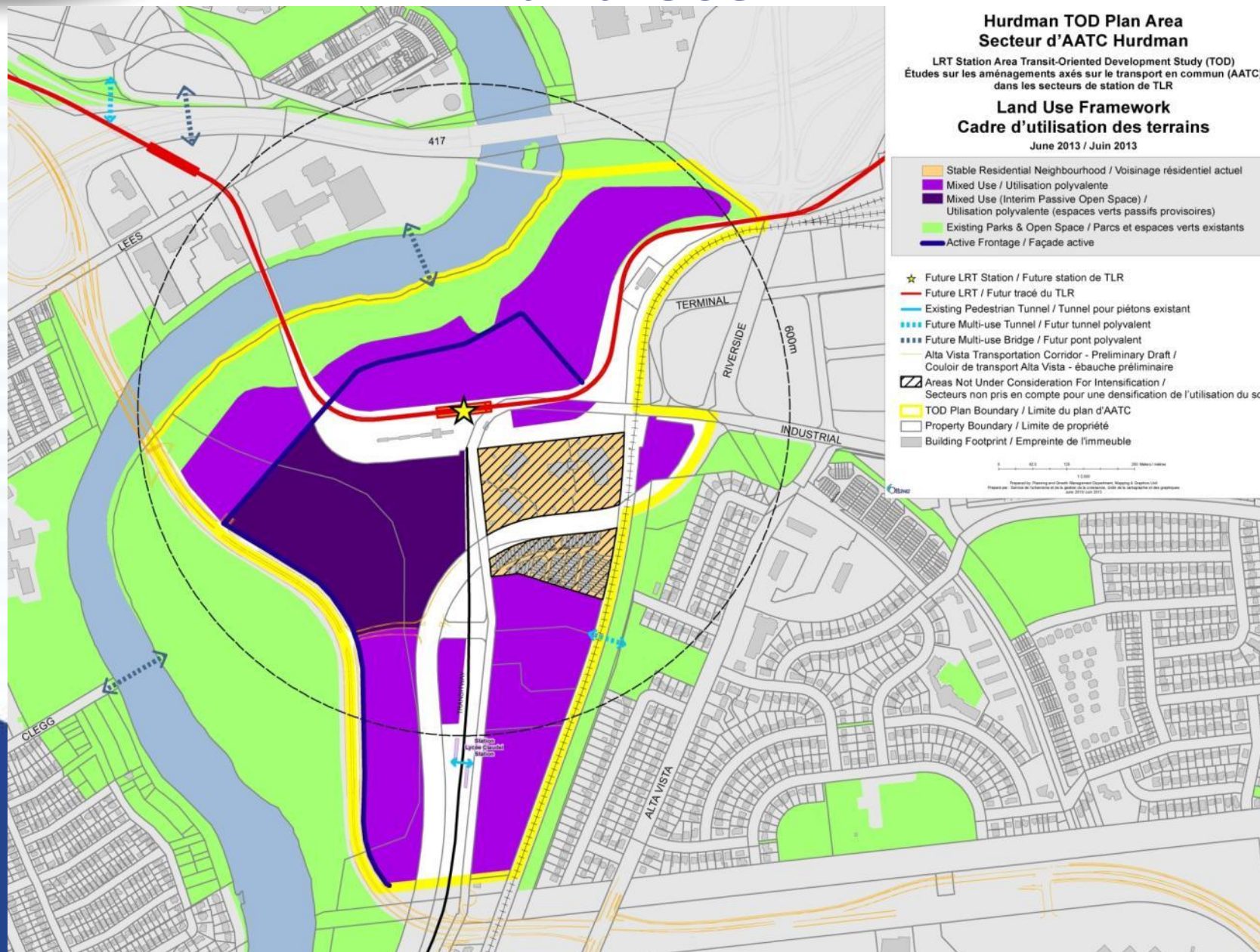
Preliminary Lees TOD

Land Use



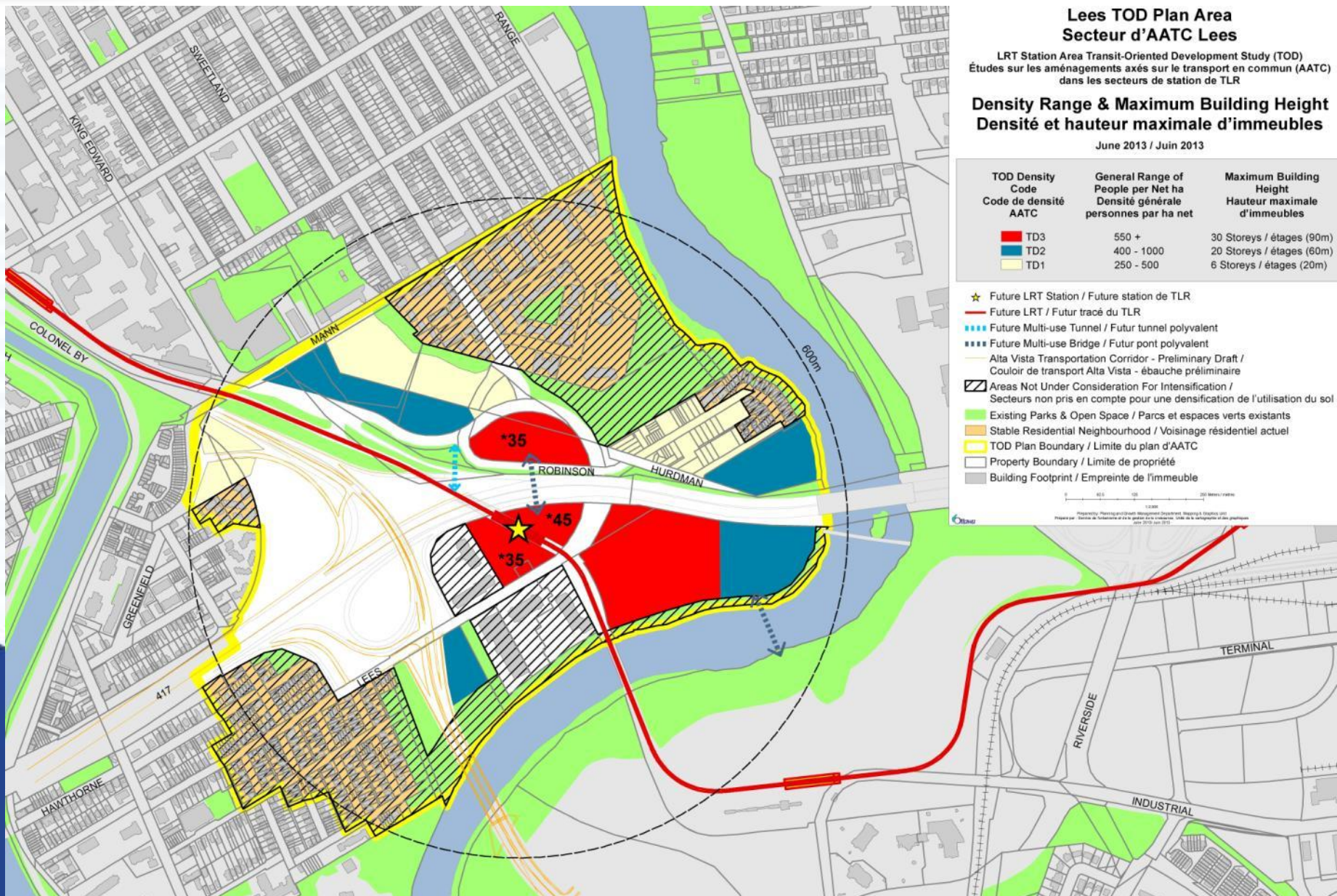
Preliminary Hurdman TOD

Land Use



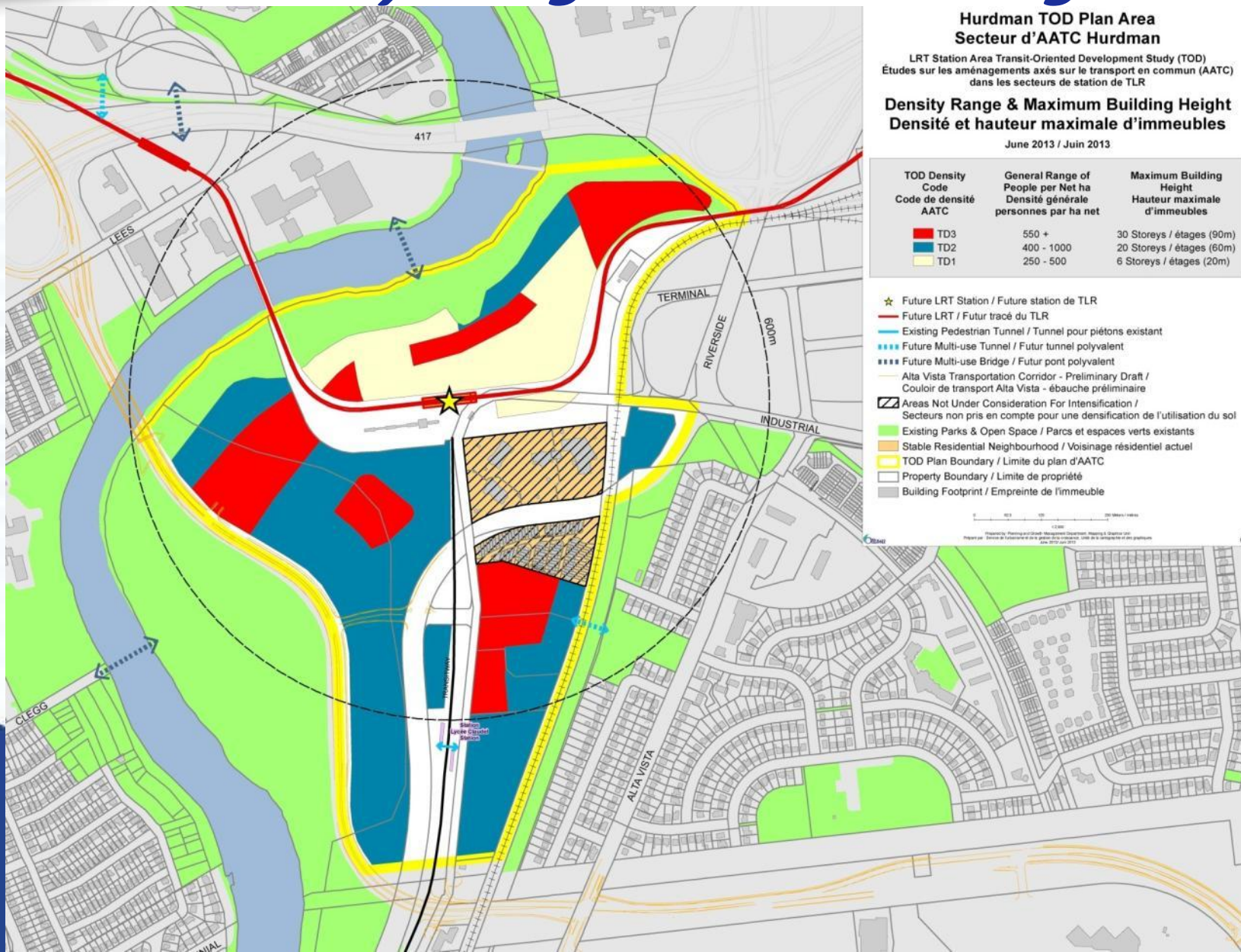
Preliminary Lees TOD

Density Range and Max. Height



Preliminary Hurdman TOD

Density Range and Max. Height

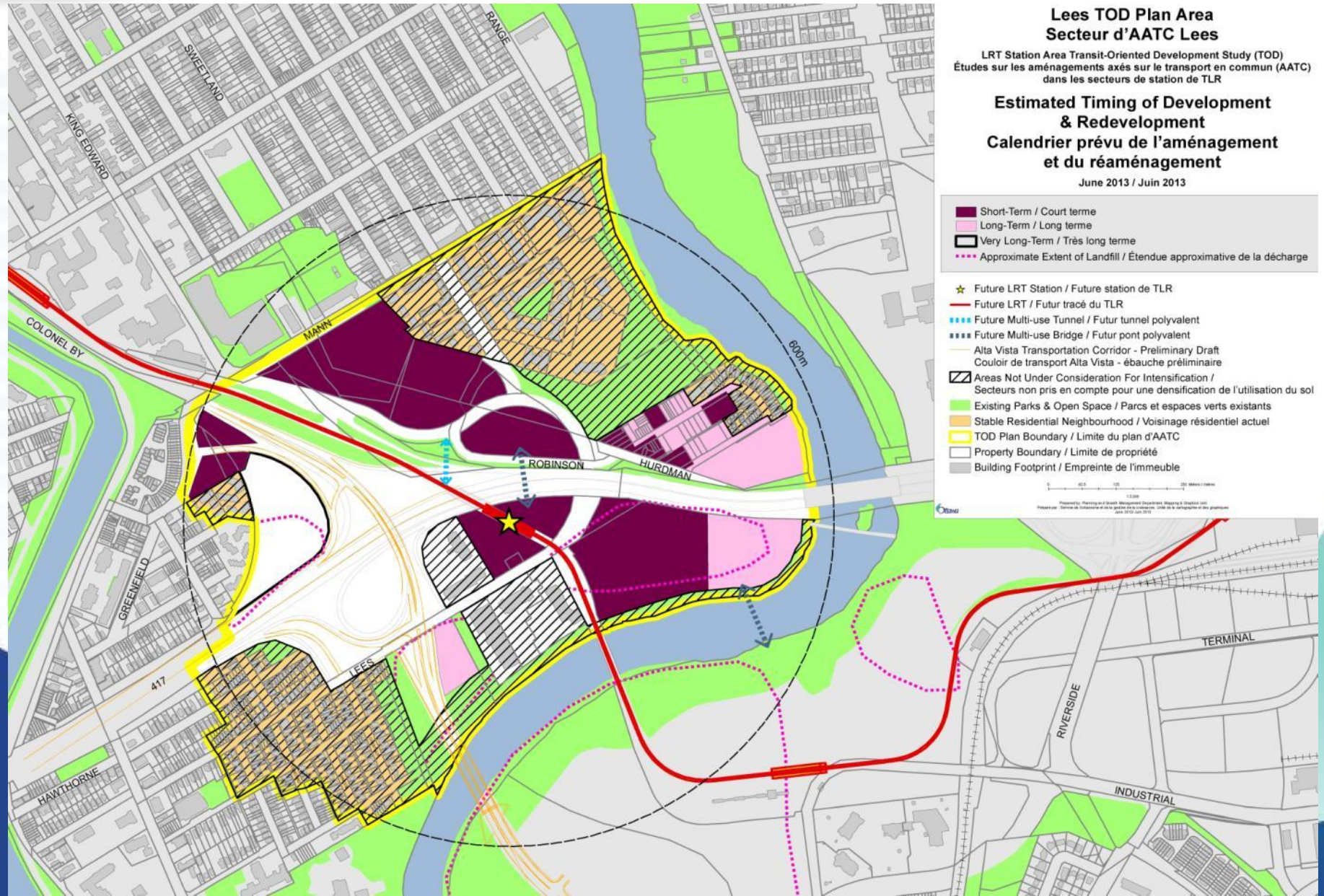


Draft TOD Density Range Estimates

TOD Plan Area	People per gross ha Existing	People per gross ha +/- 20 Yrs	People per gross ha Long Term	People per gross ha TOD Target
Lees	75	160	340	200-400
Hurdman	35	50	330	200-400
Blair	90	100	285	200-400

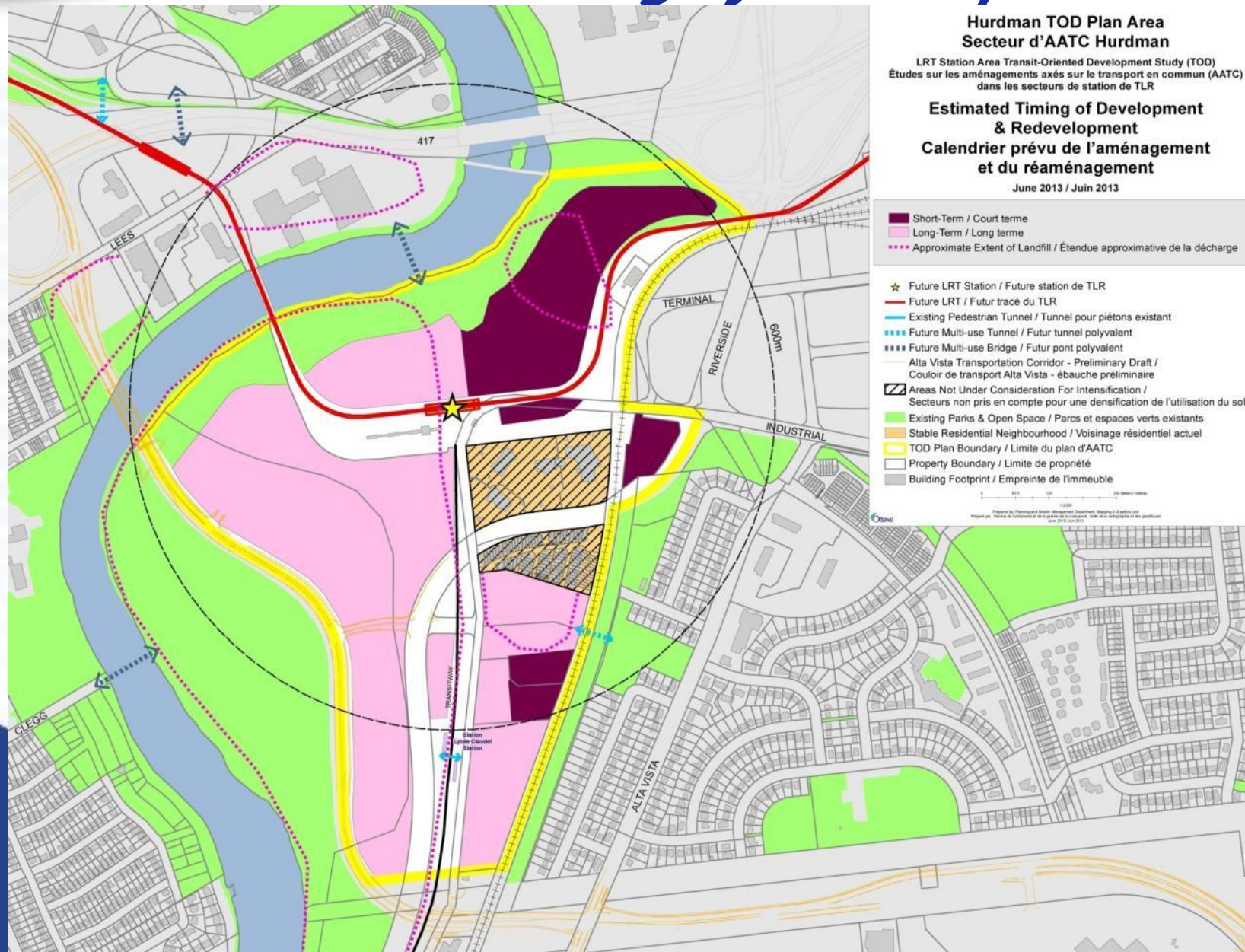
Preliminary Lees TOD

Estimated Timing of Development



Preliminary Hurdman TOD

Estimated Timing of Development



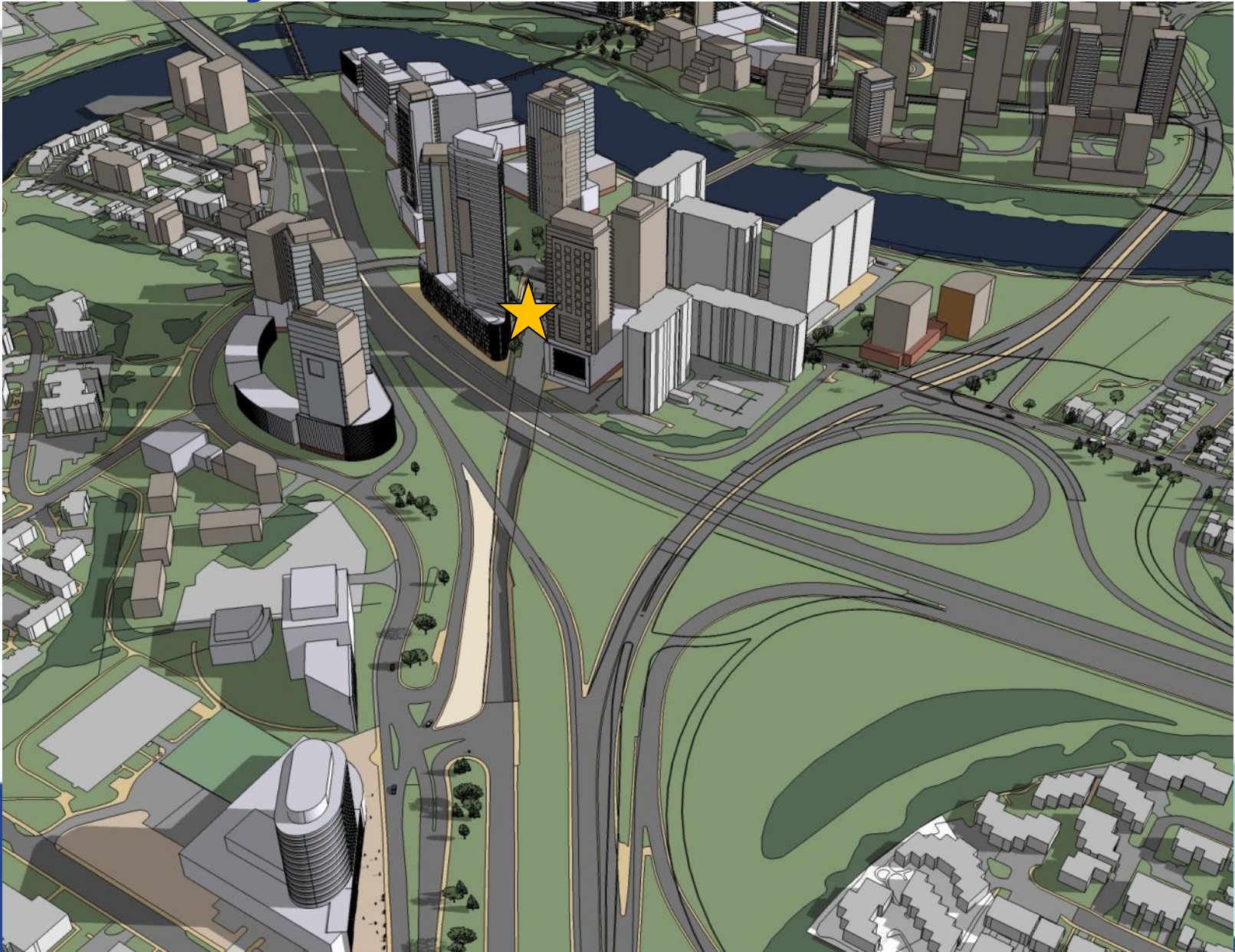


Draft Lees TOD – From Southeast



Approximately 340 people per hectare average density.

Draft Lees TOD – From Northwest



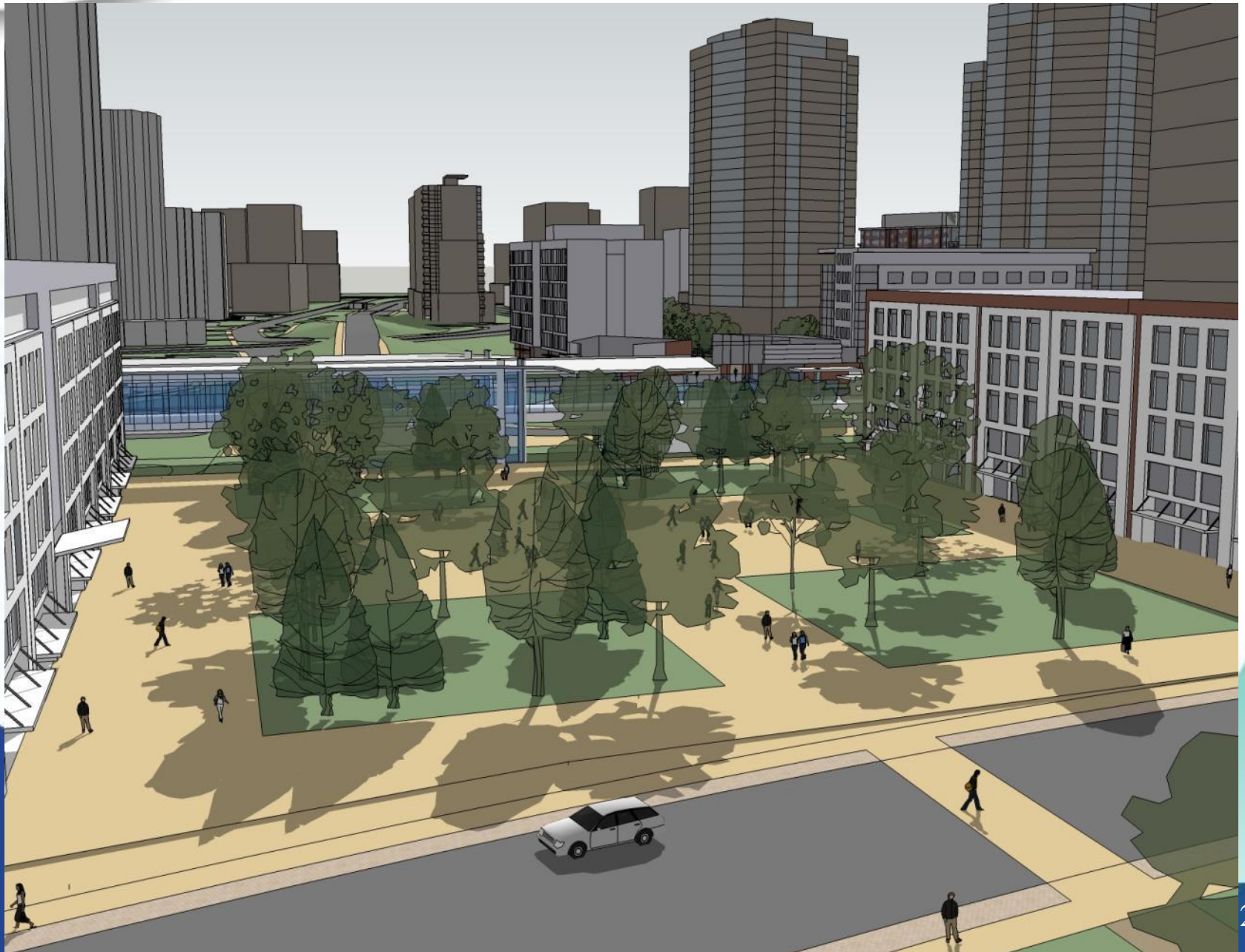
Approximately 340 people per hectare average density.

Draft Hurdman TOD – From North



Approximately 330 people per hectare average density.

Draft - Urban Square Example



Next Steps



- **City to prepare draft TOD Plan and draft Servicing Overview documents this summer.**
- **Public Open House in September.**
- **Comments please.**