



# Main Street Renewal

## Construction Newsletter No. 28

August 19, 2016

### On-Going

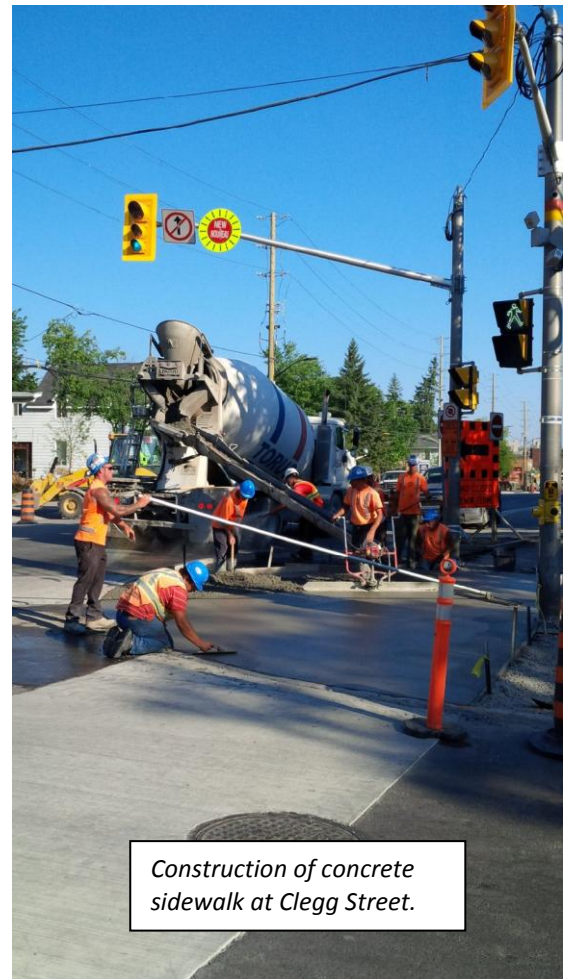
Here's a block-by-block breakdown of the work currently underway:

- **Harvey Street to Clegg Street:** Landscaping, line painting and installation of street signs;
- **Clegg Street to the McIlraith Bridge:** Replacement of lateral connections, electrical work and road work;
- **Brantwood Place Gates:** Construction of the pillar cores, and;
- **Rideau River Drive:** Connection of water services.

### Upcoming

Here are key **new** upcoming construction activities planned for the next two weeks:

- **Harvey Street to Clegg Street:** Placement of sod and placement of green thermoplastic for the cycle tracks;
- **Brantwood Place Gates:** Placement of stones on the pillars;
- **Bridge Approach:** Construction of the concrete sidewalk and placement of base asphalt, and;
- **Rideau River Drive:** Construction of the concrete sidewalk.



*Construction of concrete sidewalk at Clegg Street.*

### Traffic

#### Beckwith Road

Beckwith Road will **remain closed to traffic at Main Street until the end of September**. Beckwith Road will be open to pedestrians in September.



# Main Street Renewal

## Greenfield Avenue

Greenfield Avenue **will be closed to traffic between Main Street and Havelock Street on Saturday August 20 and Sunday August 21 as well as on Saturday August 27 and Sunday August 28** for the installation of services for a private development. Refer to attached drawing for detour details.

## Did you know?

Construction continues on the new cycle tracks and sidewalks along Main Street. Along the completed areas you will notice a uniquely textured stone on the edge of the cycle track asphalt with alternating horizontal and vertical raised bars. These 20 cm wide tiles are known as demarcator stones and they serve a very important purpose in differentiating between the two spaces and reducing conflicts between pedestrians and cyclists.

Of particular importance is that the demarcator stones unique design is an accessibility design feature. Their raised bars are cane detectable for those with visual impairments and they have a rumble strip effect for vehicle wheels (bikes) to inform users when they are straying from their designated area. The stones are also visually recognizable with their different surface material and colour from the surrounding pavers and asphalt.



The demarcator stones used along Main Street have many other benefits, such as:

- No grooves or ledges for bicycles to catch on;
- Easy to maintain, as the texture will not catch snow plough blades;
- The stones do not pool or dam water, and;
- The stones are made from a durable concrete material to reduce long-term maintenance costs.

Another example of the unique design features being incorporated throughout the renewed corridor!

Accessible formats and communication supports are available, upon request, at the following link: [www.ottawa.ca/accessibleformat](http://www.ottawa.ca/accessibleformat)