

McIlraith Bridge - Background

The McIlraith Bridge was constructed in 1964 to link Smyth Road (East Approach) and Main Street (West Approach) over Rideau River and Riverside Drive.

In 2005, the City of Ottawa undertook the process of assessing the conditions of the structure. The assessment of the structure identified a need for major structural repairs.

Following the assessment, the City of Ottawa initiated the detailed design process for the rehabilitation. The detail design is now nearing completion and construction is planned to begin next year.

The work will be carried out in the two (2014 & 2015) construction seasons with a winter shutdown.

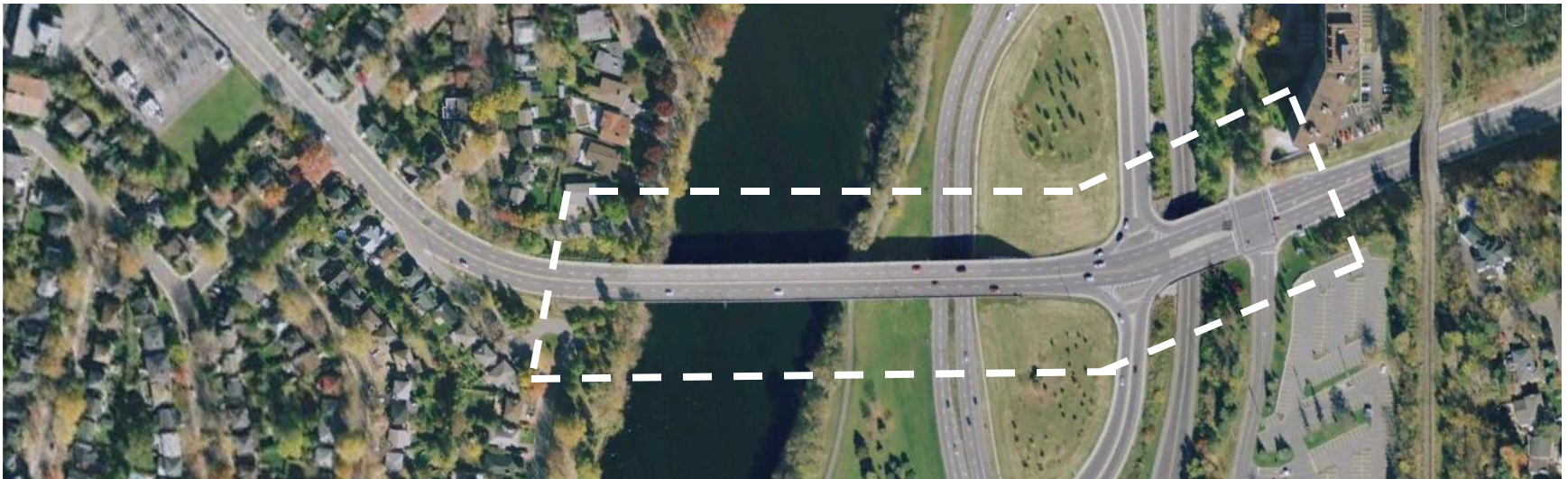
Four lanes of traffic will be open during winter shutdown with construction activities limited to the underside of the bridge.

STUDY AREA

The study area extends from the end of Main Street to the Riverside Hospital entrance.

The project is located within the limits of

- Ward 17 – Capital (Councillor David Chernushenko)
- Ward 18 – Alta Vista (Councillor Peter Hume)



Project Objectives

The goals of this project are:

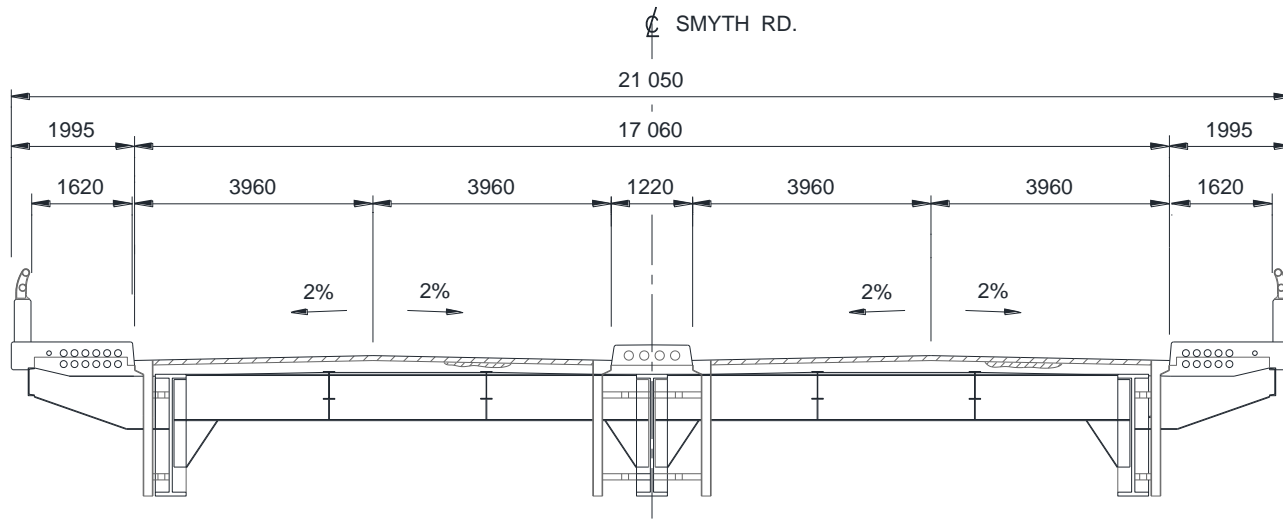
- Repair the Bridge
- Improve Roadway Illumination
- Provide Bicycle Lanes on the Bridge
- Repairs to Pathway under the structure from Main Street side



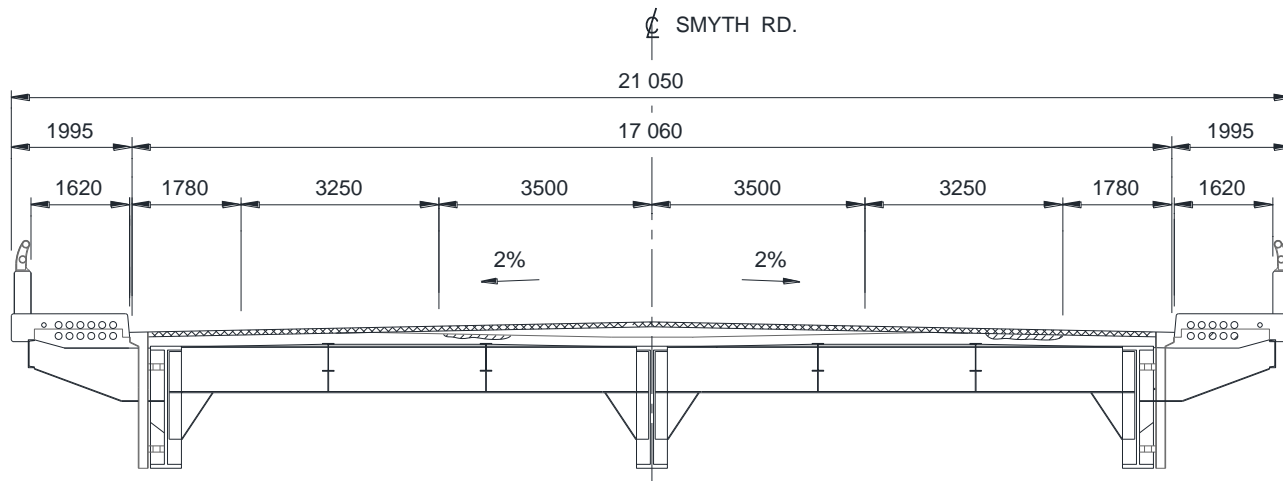
Structural Rehabilitation

The Structural rehabilitation of the McIlraith Bridge includes:

- The removal of the centerline median to widen the road in order to accommodate Bicycle Lanes adjacent to the sidewalks
- Repairs to concrete
- Concrete Overlay on the Deck
- Seismic Upgrades,
- Expansion Joints Replacements
- Replacement of Waterproofing and Paving of the Bridge
- Sidewalks and Parapet Walls Repairs
- Abutment Repairs
- Painting of the Steel Support Structure
- Improvements in illumination
- Bird Screen Protection Installation
- Repairs to pathway on Main Street end.



EXISTING SECTION



PROPOSED SECTION

Scope of Work

Stage 1 Work – May 2014 to October 2014:

- Install detour for stage 1
- Install hoarding for protection of pedestrians on the paths under the bridge.
- Install Protection System under the Structure.
- Temporarily raise the pedestrian railing on sidewalks.
- Repair the bridge in stage 1 and Pave

Winterize - November 2014:

- Install temporary concrete barriers between West-bound and East-bound traffic.
- Install pavement markings for winter.
- Open the road to full four lanes of traffic for winter

Winter Shutdown

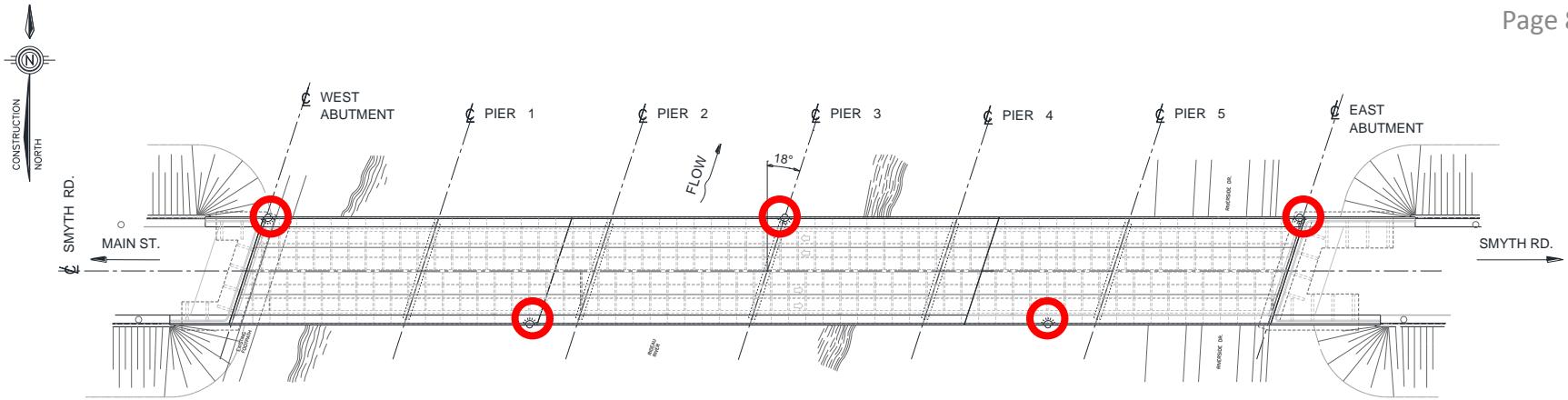
November 15, 2014 - March 30, 2015:

- Four lanes of traffic open on the Bridge
- Work underside of the Bridge
- Re-face Concrete Abutments

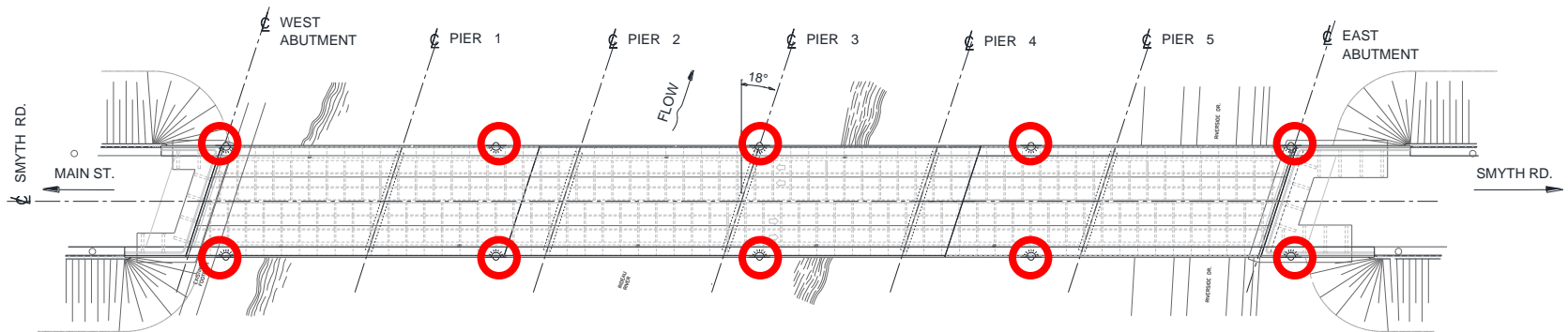
Stage 2 Work – April 2015 to October 2015:

- Install detour for stage 2
- Repair the bridge in stage 2 and Pave
- Install Seismic Reinforcement
- Paint the Bridge
- Install Bird Screens
- *Lane Reductions on Riverside Drive (June-August)*
- Street Lights Improvements



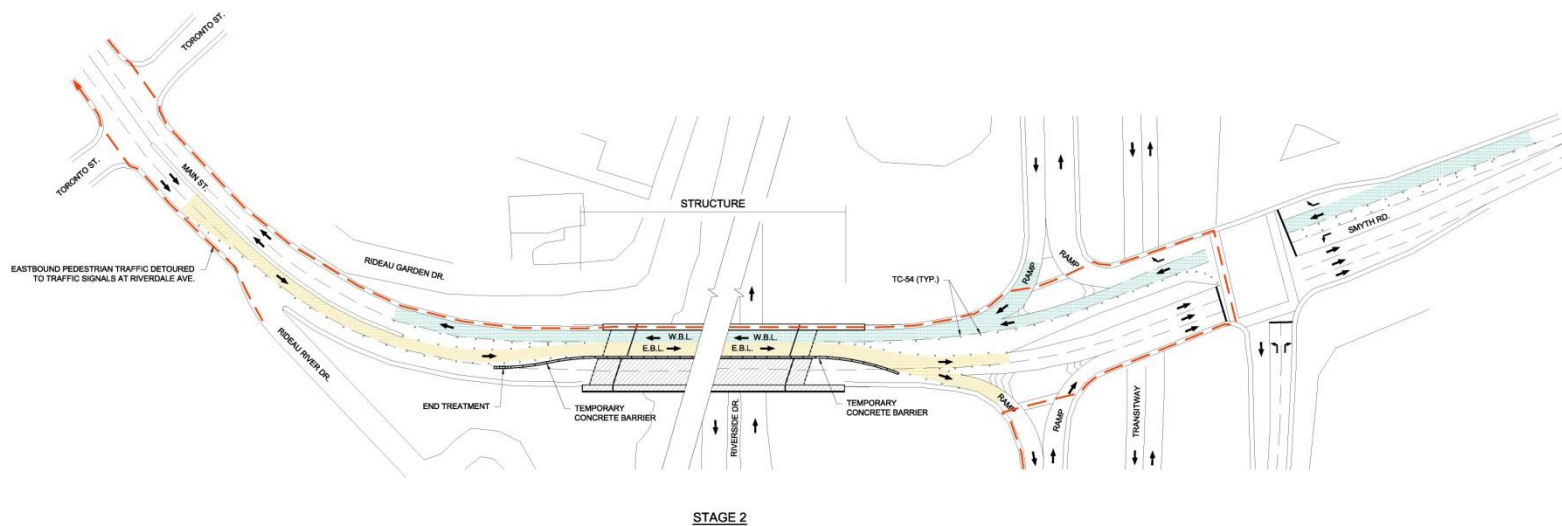
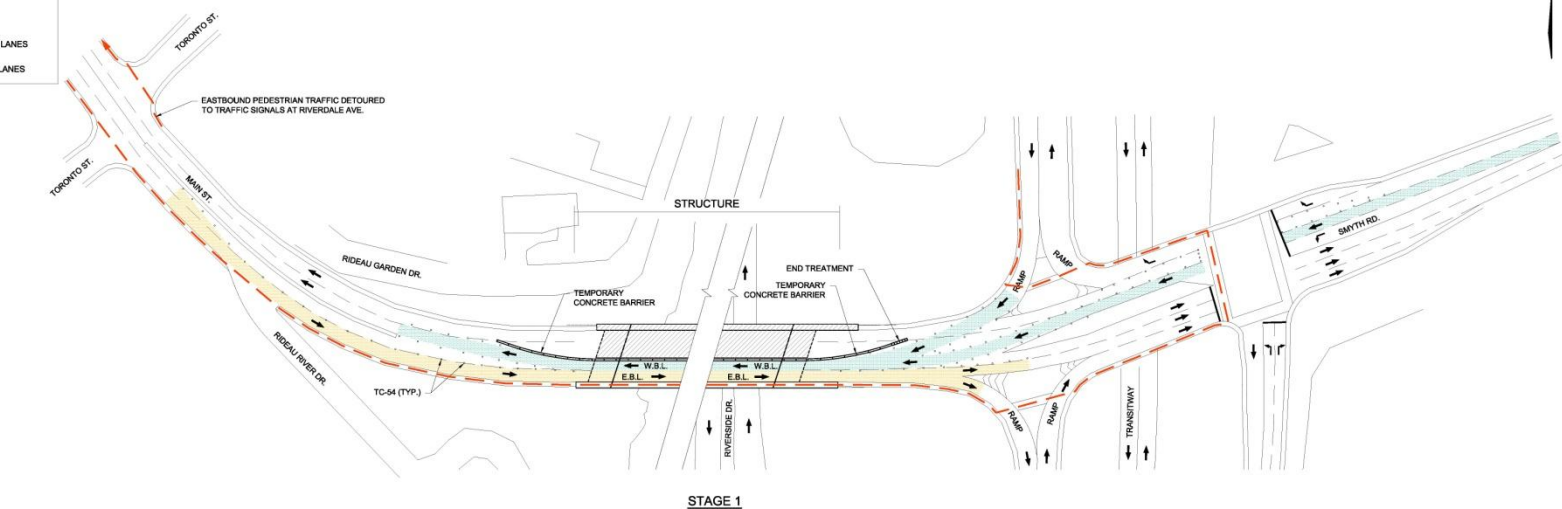
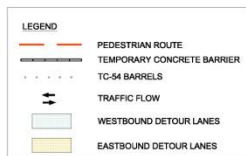


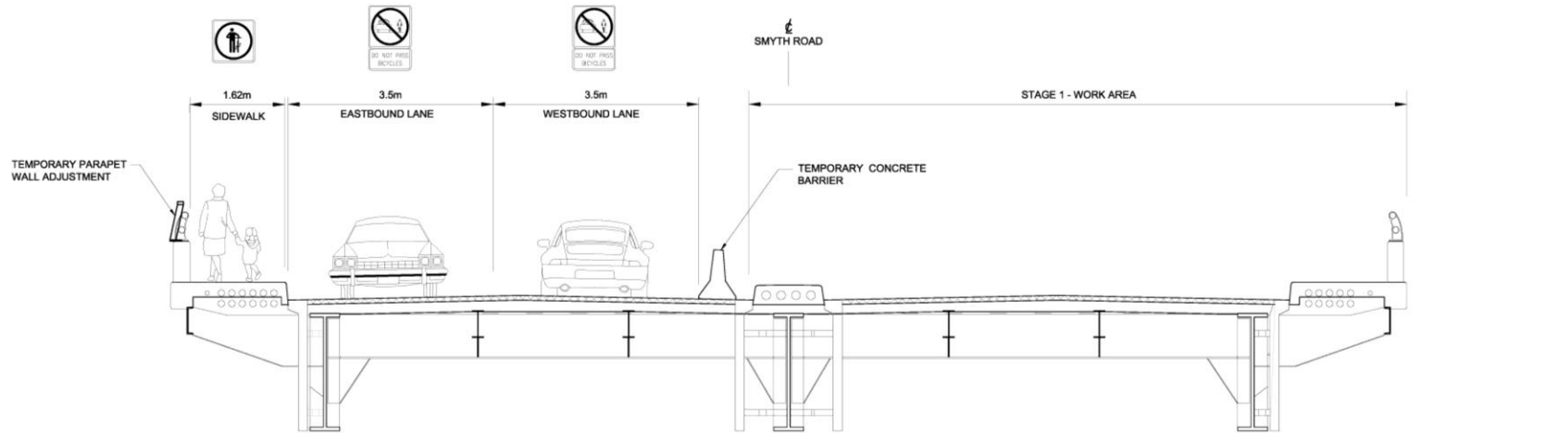
EXISTING LIGHTING



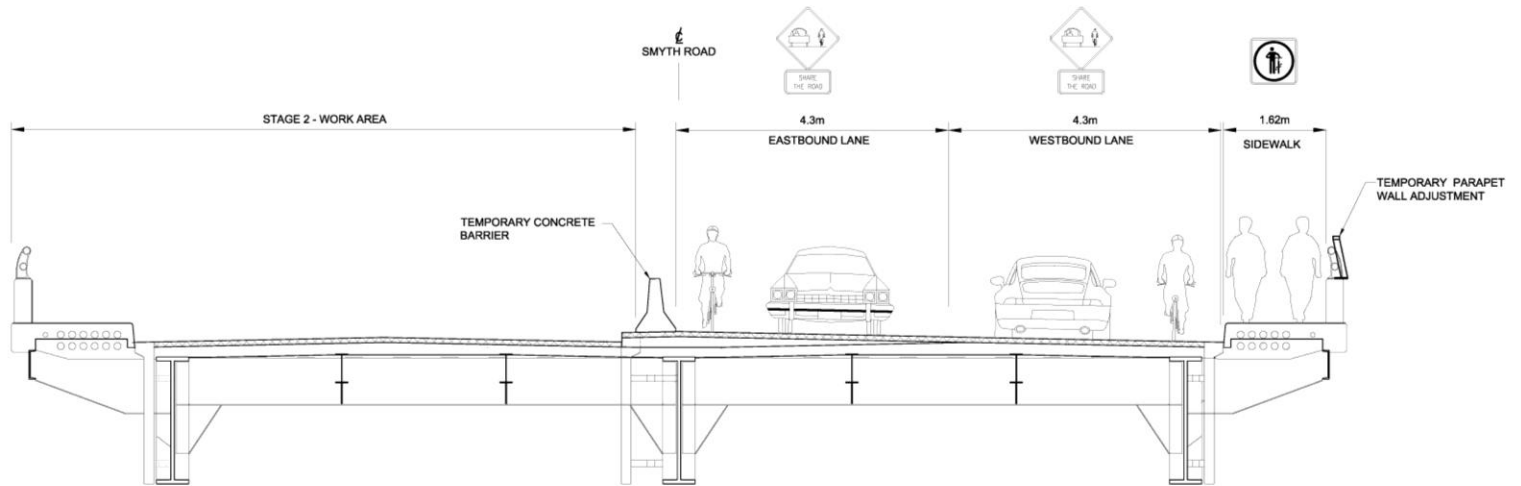
PROPOSED LIGHTING

ILLUMINATION IMPROVEMENTS

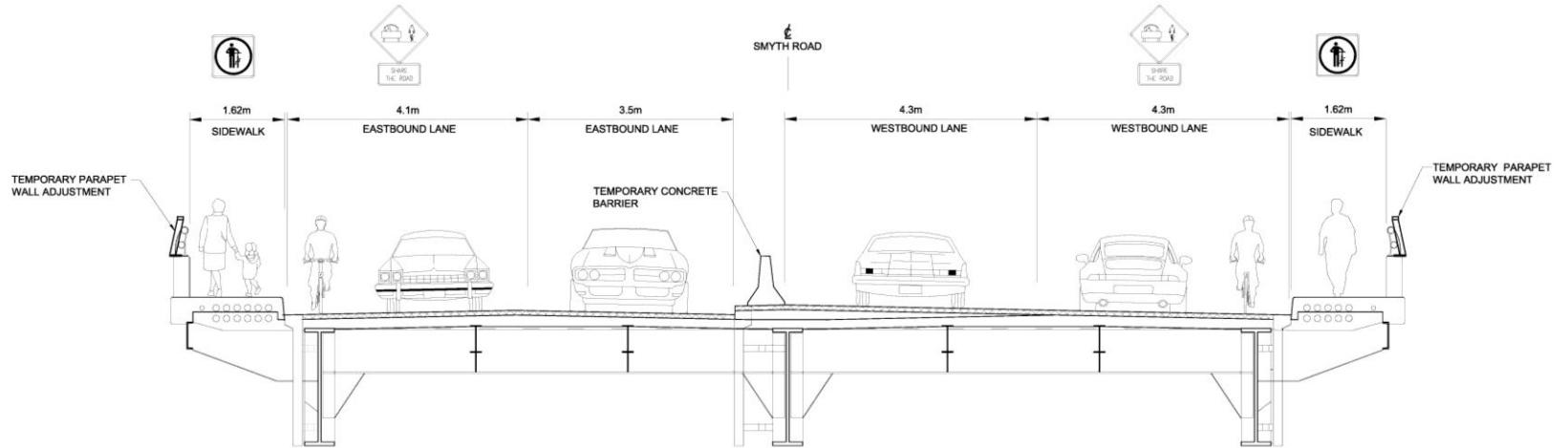




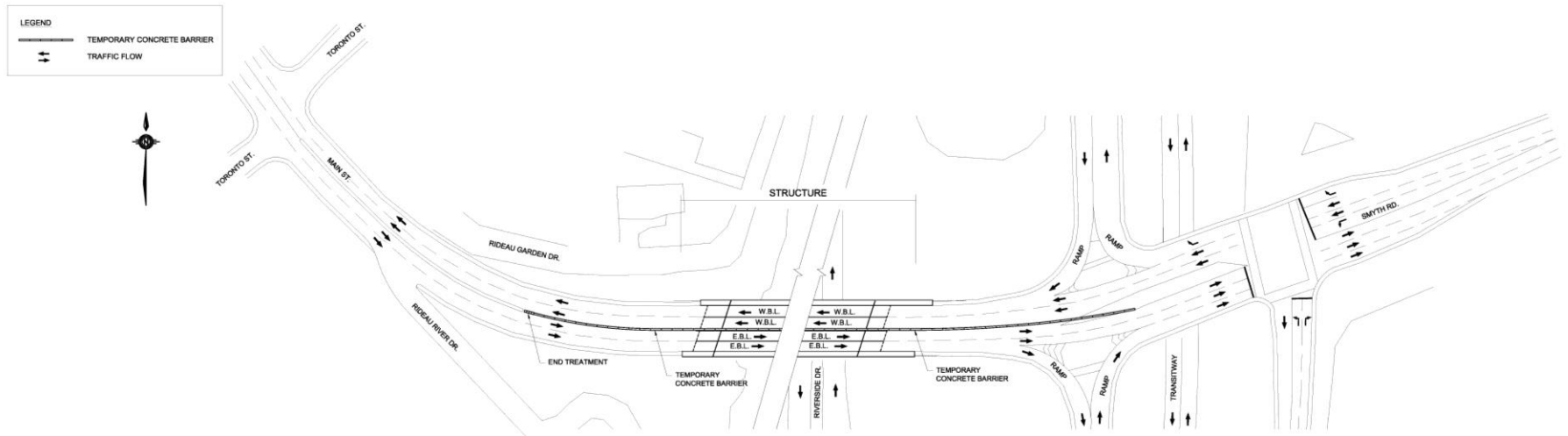
STAGE 1



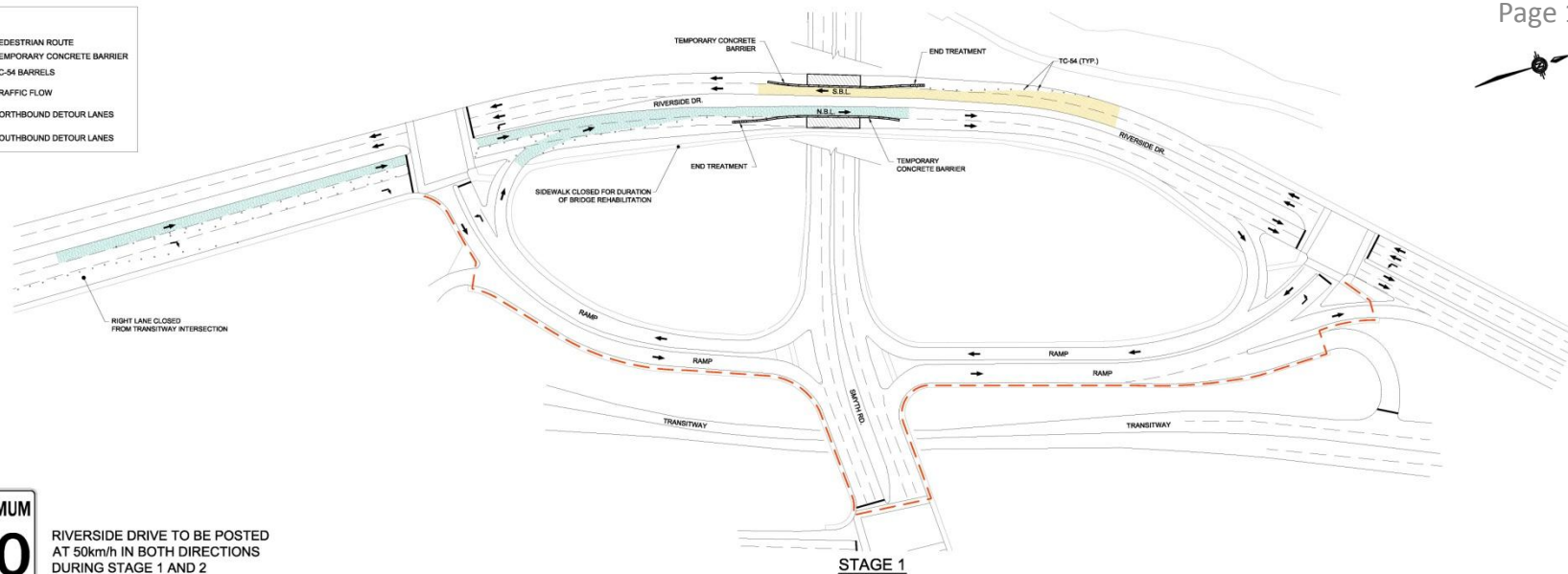
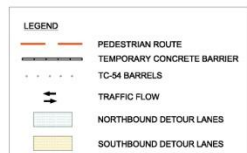
STAGE 2



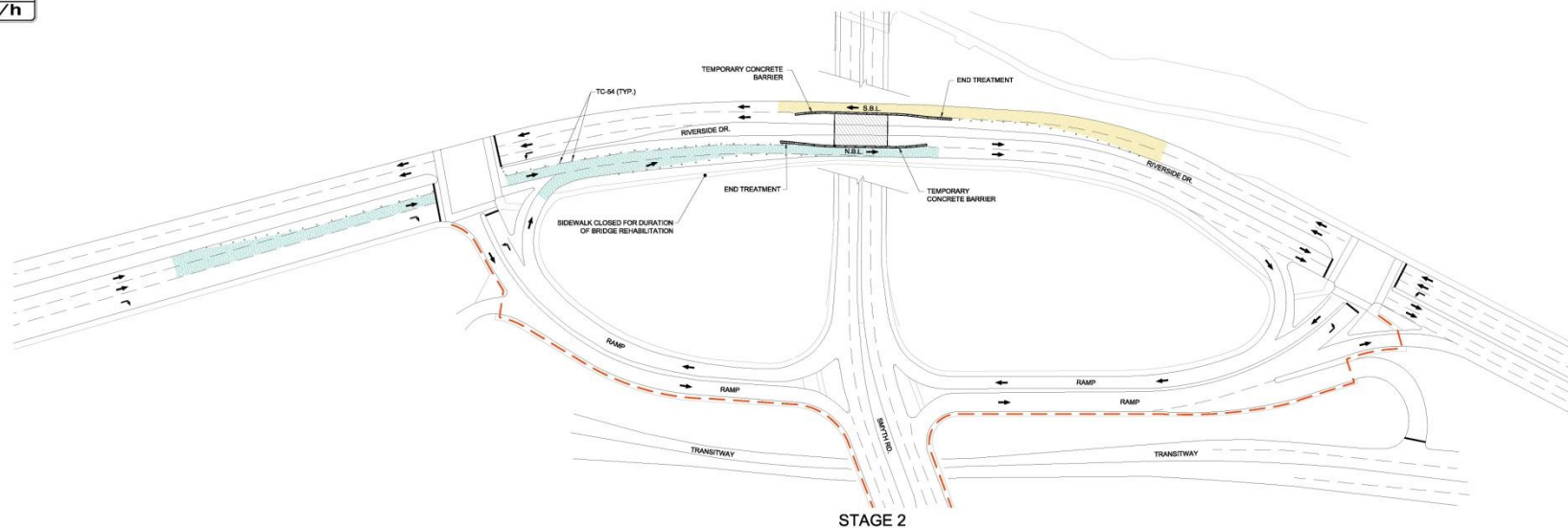
SECTION ON BRIDGE



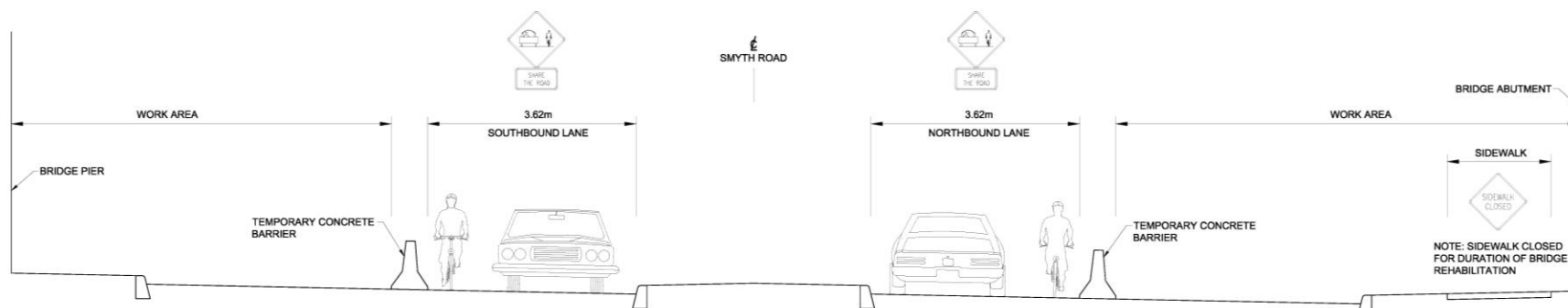
PLAN



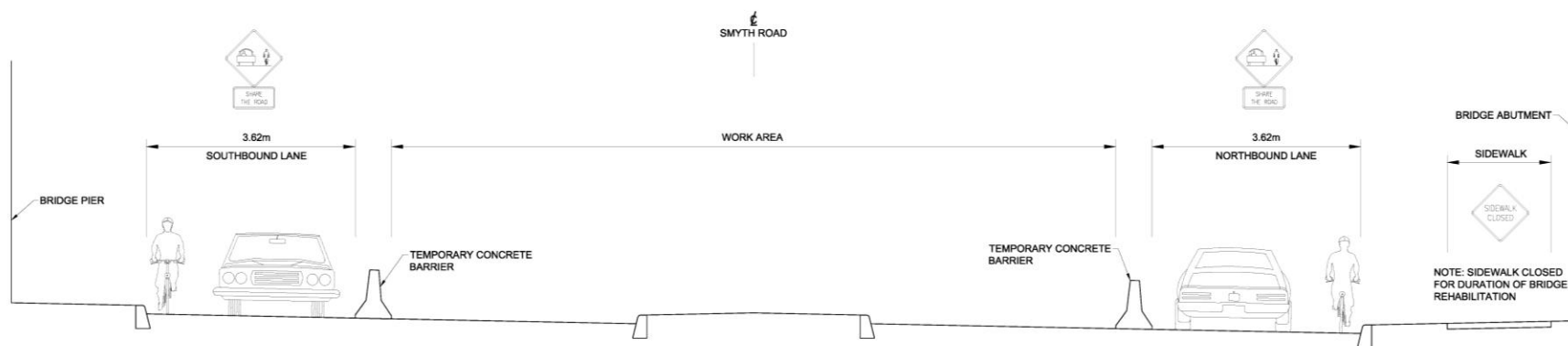
RIVERSIDE DRIVE TO BE POSTED
AT 50km/h IN BOTH DIRECTIONS
DURING STAGE 1 AND 2



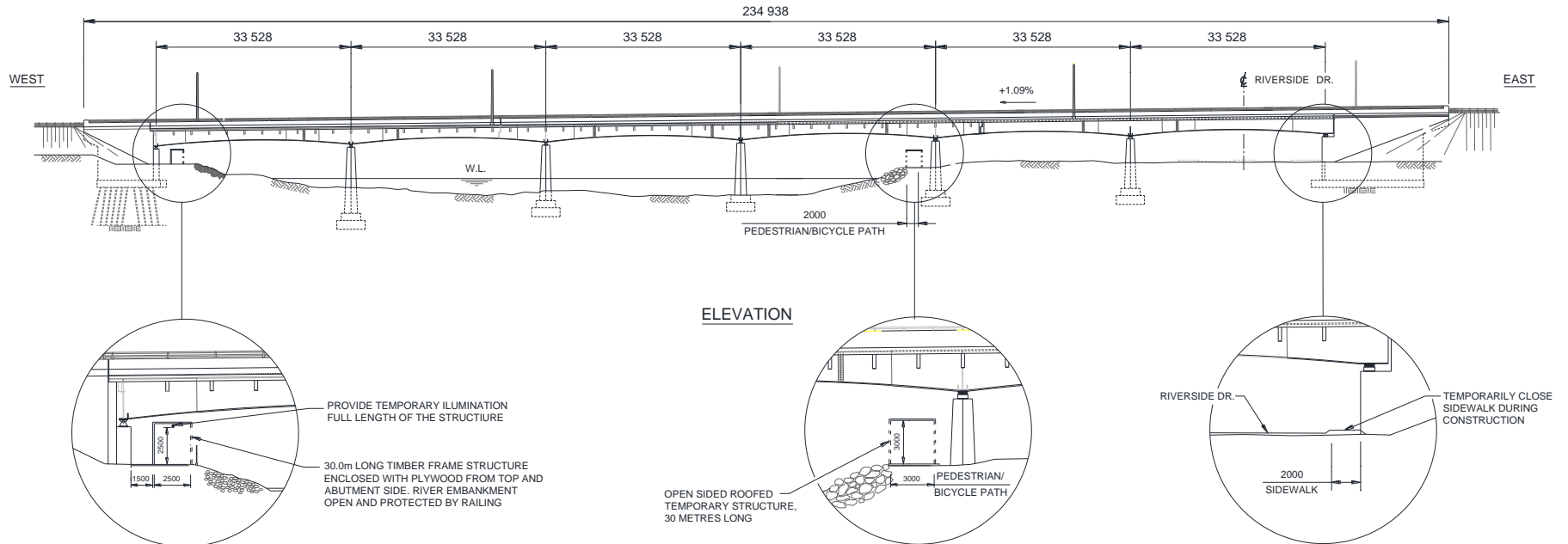
RIVERSIDE DRIVE STAGING MID JUNE TO AUGUST 2015



STAGE 1



STAGE 2



NEXT STEP

Following this public Open House, the following steps will need to be taken to complete the project:

- Receive Public Comments (June 2013)
- Finalize Design (2013)
- Tendering Process (Fall 2013)
- Construction Start (April 2014)

We encourage you to fill out a comment sheet to indicate any concerns or general comments you have on the Proposed Project. City of Ottawa or GENIVAR representatives can assist you in completing the above activities or answering any questions you may have.

Please provide your completed comment form on or before **June 25, 2013**. Methods of sending in your form are indicated on the Comment Sheet.