

# Rideau River Western Pathway

## Functional Design Study

Public Consultation Group – Meeting No. 3

Robin Bennett, MCIP RPP  
City Project Manager

Christopher Gordon, P. Eng.  
Consultant Project Manager

**November 6 2013**



# Meeting Agenda

**1** Project Review

**2** Consultation Summary

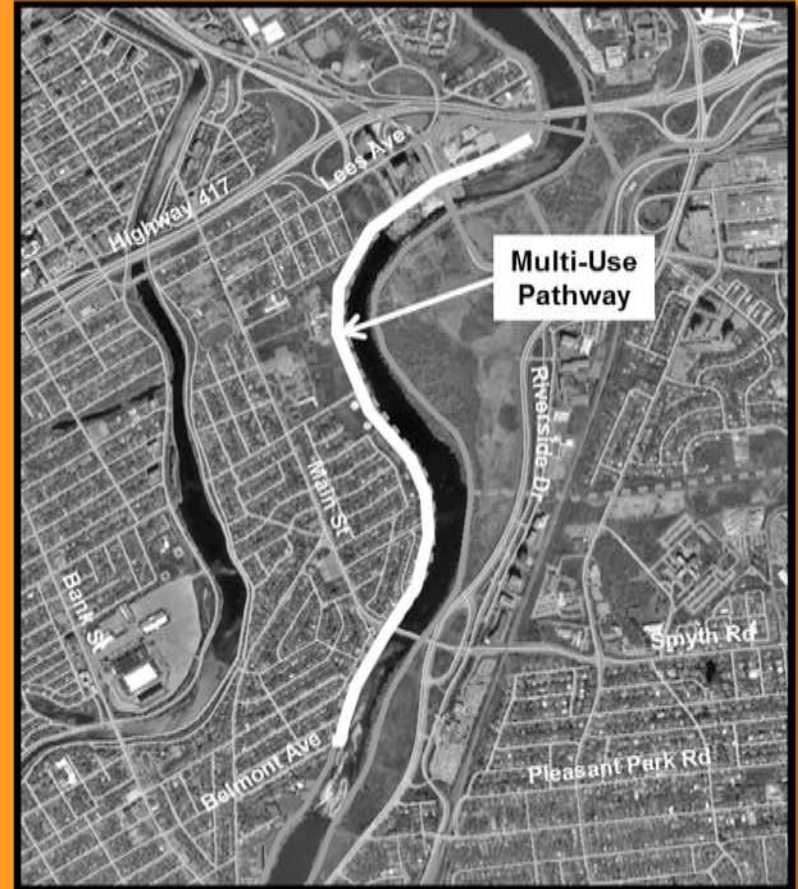
**3** Evaluation Process

**4** Pathway Plan

**5** Next Steps

# Introduction

- The Rideau River Multi-Use Pathway (MUP) extends from the Lees Avenue Campus to Belmont Avenue in Old Ottawa South.
- The purpose of today's meeting is to present the evaluation process and proposed pathway plan following consultation this far.



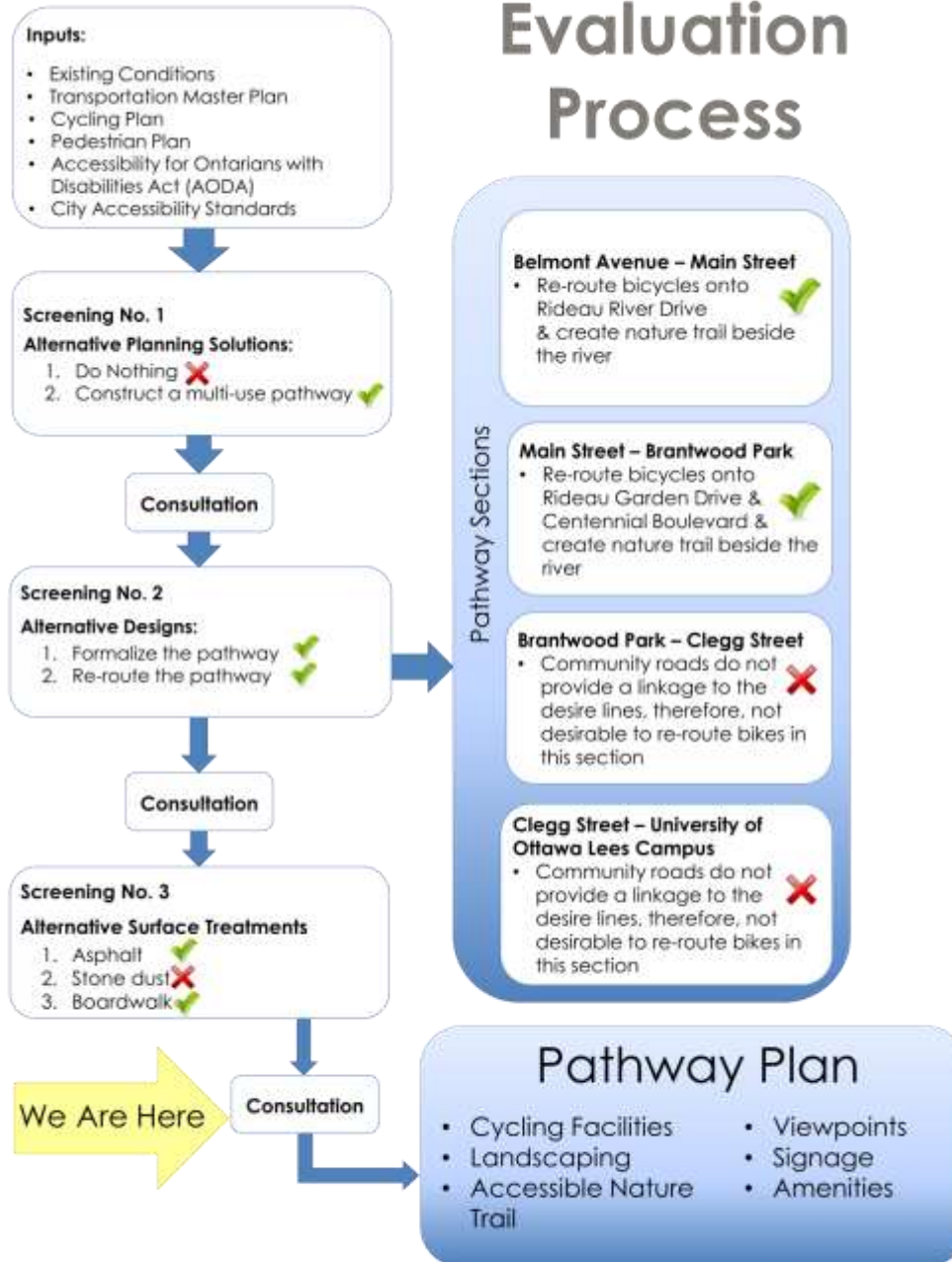
# Consultation Summary

- Agency Consultation Meeting No. 1
- Public Consultation Meetings No. 1 & 2
- Public Open House No. 1

Comments noted during these events were as follows:

- **Highlight Nature:** residents and PCG members expressed their desire for a stonedust nature trail. Nature-oriented design e.g. benches and lookouts
- **Accessibility Standards:** design considerations for meeting the City's standards and AODA. Re-grading areas with difficult slopes to make accessible for all users.
- **Connectivity:** support for formalizing cycling routes and connections to other communities
- **Safety:** concerns raised for pedestrians sharing the pathway with cyclists

# Evaluation Process





# Belmont – Rideau River

## LEGEND / LÉGENDE

-  PROPOSED ASPHALT PATH / SENTIER PROPOSÉ EN ASPHALTE
-  PROPOSED BOARDWALK / PROMENADE EN BOIS PROPOSÉE
-  PROPOSED BOARDWALK / TRONÇON PROPOSÉ
-  BICYCLE OR HOKEY / VÉLO SUR LA NEIGE PROPOSÉ
-  PROPOSED STORAGE / ÉMISE PROPOSÉE

-  PROPOSED DECIDUOUS TREE / ARBRE CADUCIF PROPOSÉ
-  PROPOSED CONIFEROUS TREE / ARBRE CONIFÈRE PROPOSÉ
-  PROPOSED RESTORATION BED / LIT DE RÉGÉNÉRATION PROPOSÉ
-  PROPOSED SHRUB BED / LIT D'ARBUSTES PROPOSÉ
-  PROPOSED SEATING AREA / VIEW OF RIVER / HAUTE AVEC VUE DE LA RIVIÈRE

## TREE SPECIES / ESPÈCES D'ARBRES



RED OAK / CHÈNE ROUGE



SUGAR MAPLE / ÉRABLE À SUCRE



NORWAY SPRUCE /  
ÉPINETTE DE NORVÈGE



WHITE SPRUCE /  
ÉPINETTE BLANCHE

## BOARDWALK PERSPECTIVE / PERSPECTIVE DE LA PROMENADE EN BOIS



**RIDEAU RIVER MULTI-USE PATH**  
**SENTIER POLYVALENT LE LONG DE LA RIVIÈRE**  
**RIDEAU**  
**OTTAWA, ONTARIO**

BOARDWALK PERSPECTIVE/  
PERSPECTIVE DE LA PROMENADE EN BOIS





# Rideau River - Brantwood

SECTION A-A1 - RIDEAU GARDEN /  
COUPE A-A1 - RIDEAU GARDEN



SHRUB SPECIES / ESPÈCES ARBUSTIVES



DOGWOOD - WINTER INTEREST /  
CORNOUILLER - EFFET HIVERNAL



DOGWOOD /  
CORNOUILLER



SHRUB LILAC /  
LILAS COMMUN

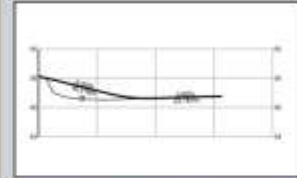


SERVICEBERRY /  
AMELANCHIER DU CANADA

PERSPECTIVE - CENTENNIAL BOULEVARD



SECTION / EAST OF BRANTWOOD  
COUPE / EST DE BRANTWOOD





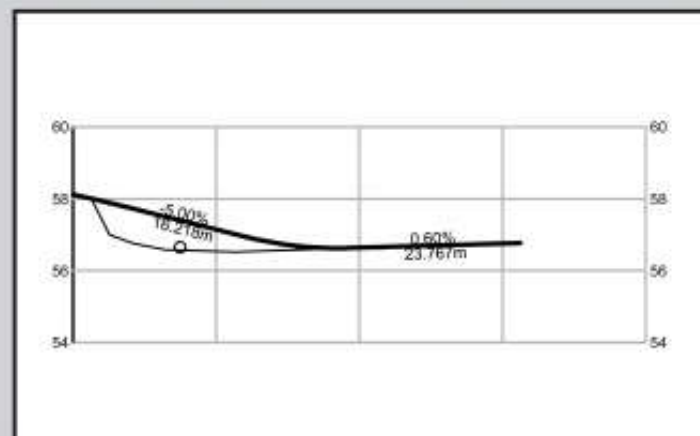
# SECTION A-A1 - RIDEAU GARDEN / COUPE A-A1 – RIDEAU GARDEN



## PERSPECTIVE - CENTENNIAL BOULEVARD



## SECTION / EAST OF BRANTWOOD COUPE / EST DE BRANTWOOD



# Brantwood - Clegg

SITE FURNISHINGS / MOBILIER URBAIN

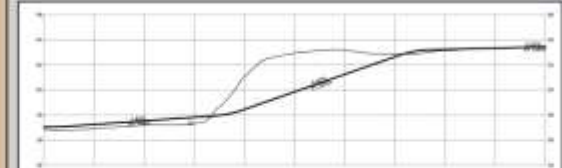


ORNAMENTAL GRASS SPECIES / ESPECES DE GRAMINEES

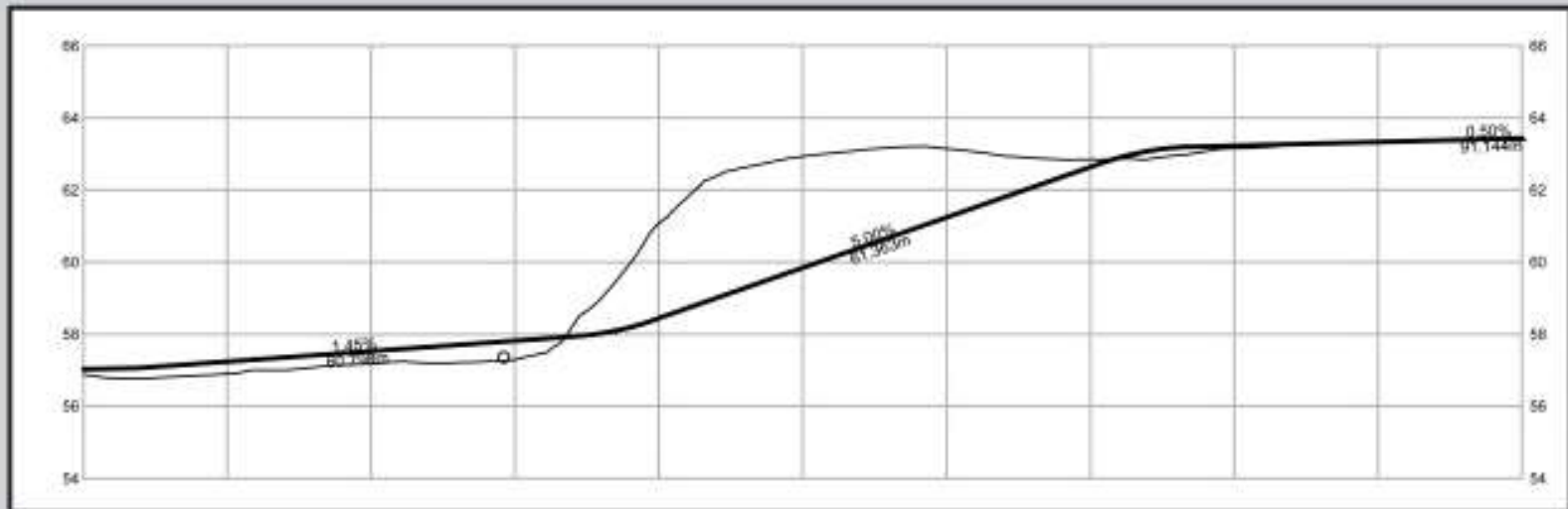


GRAMINEE WENDENHAIR GRASS GRAMINEE FEATHERREED GRASS

SECTION / SLOPE CONNECTION AT ST PAUL UNIVERSITY  
COUPE / PENTE CONNECTANT À LA UNIVERSITE ST-PAUL



SECTION / SLOPE CONNECTION AT ST PAUL UNIVERSITY  
COUPE / PENTE CONNECTANT À LA UNIVERSITÉ ST-PAUL





# St-Paul University - Springhurst Park



# Springhurst Park – University Campus

ORNAMENTAL GRASS SPECIES / ESPÈCES DE GRAMINÉES



GRASS COMBINATION WINTER INTEREST / COMBINAISON DE GRAMINÉES – EFFET HIVERNAL



GRAMINÉE SWITCH GRASS

SECTION / TRANSITWAY UNDERPASS  
COUPE / PASSAGE SOUS LE TRANSITWAY



LEGEND / LÉGENDE

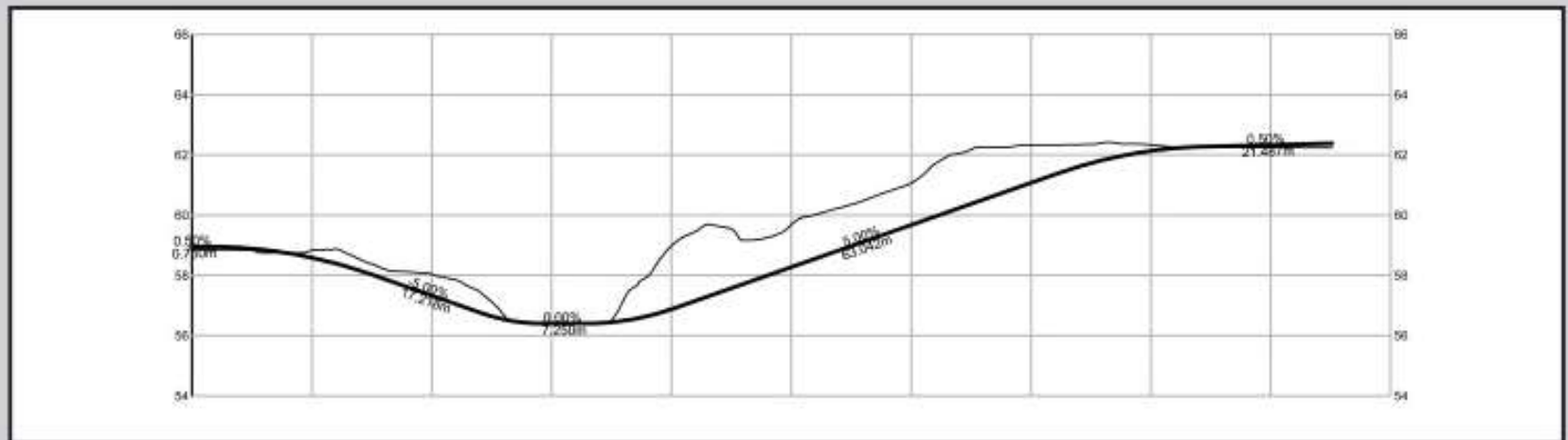
-  PROPOSED ASPHALT PATH / SENTIER PROPOSÉ EN ASPHALTE
-  PROPOSED SIDEWALK / PROMENADE EN BOIS PROPOSÉE
-  PROPOSED SIDEWALK / TRACÉ PROPOSÉ
-  BICYCLE ON ROAD / VÉLO SUR LA ROUTE PROPOSÉE
-  PROPOSED SURFACE / ENCADRE PROPOSÉE
-  PROPOSED DECIDUOUS TREE / ARBRE CADUCIF PROPOSÉ
-  PROPOSED LEAFLESS TREE / ARBRE COUPE PROPOSÉ
-  PROPOSED REVEGETATION BED / LIT DE REVEGETATION PROPOSÉE
-  PROPOSED SHRUBBERY / LIT D'ARBUSTES PROPOSÉE
-  PROPOSED SEATING AREA VIEW OF RIVER / HAUTE AVEC VUE DE LA RIVIÈRE



**RIDEAU RIVER MULTI-USE PATH**  
**SENTIER POLYVALENT LE LONG DE LA RIVIÈRE**  
**RIDEAU**  
**OTTAWA, ONTARIO**



SECTION / TRANSITWAY UNDERPASS  
COUPE / PASSAGE SOUS LE TRANSITWAY



# Pathway Plan

- **Integrated multi-use pathway connection from Belmont to the University of Ottawa Lees Campus**
  - Formalize pathway
  - Sections of nature trail
  - Meets AODA and City Accessibility Standards
  - Landscaping
  - Signage
  - Amenities
- **Timelines: Identified as Phase 1 project**
- **Capital Cost Estimate:**
  - 1 – 1.5 M



# Next Steps

- **Pathway Plan**
  - Public Open House – November 13th
  - Consolidate Consultation Comments
  - Complete Pathway Plan
  - Complete Cost Estimate
  
- **Future Activities**
  - Preliminary and Detailed Design
  - Approvals: RVCA, landowners